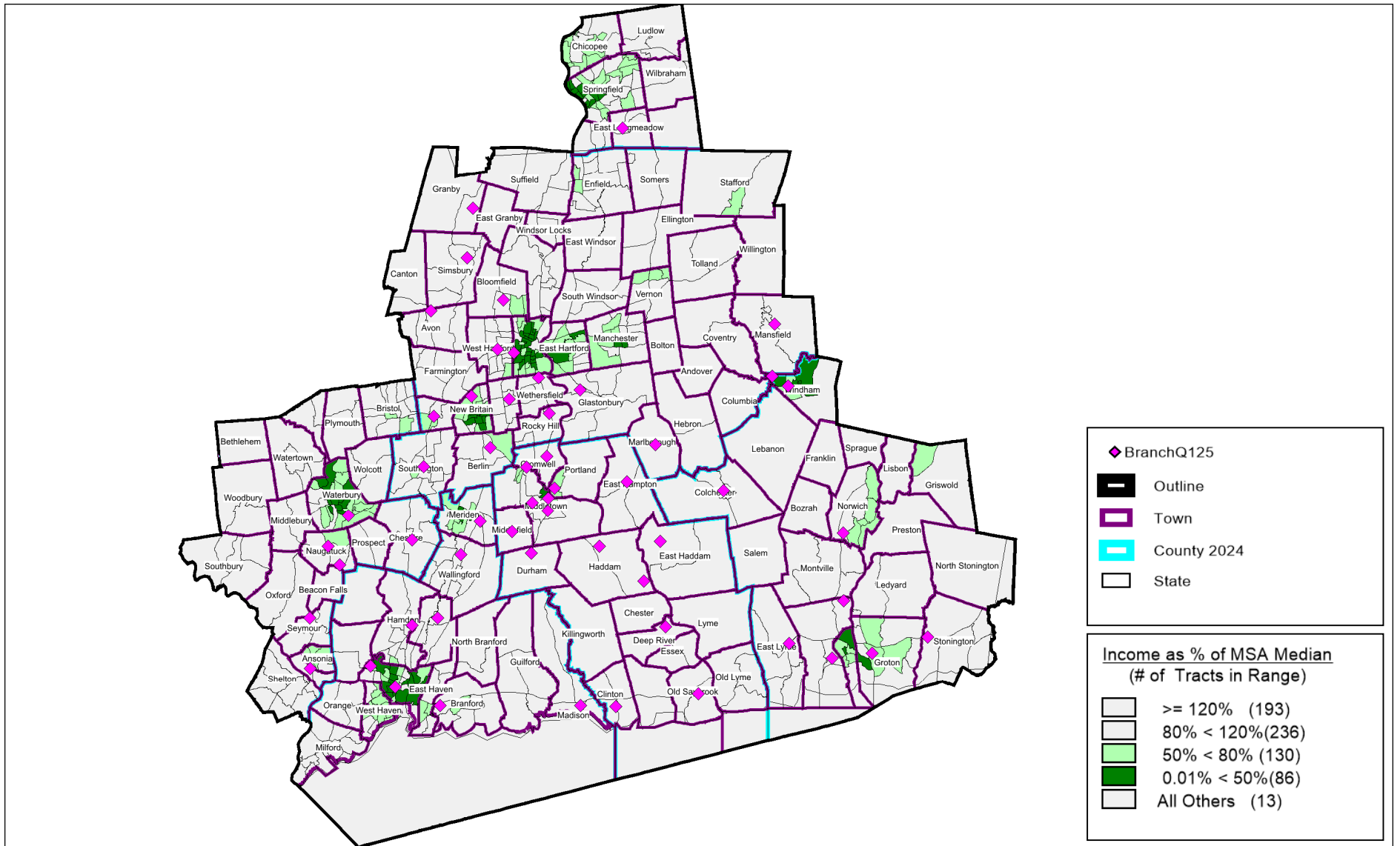


Liberty Bank - Combined CRA Assessment Area



State	MSA Code	MSA Name	County Code	County Name	Census Tract	City/Town	Income as % of MSA Median	Income Category
CT	25540	Hartford-West Hartford-East Hartford, CT MSA	110	Capitol PR	4001.01 (Mod)	Berlin	79.9	Moderate
CT	25540	Hartford-West Hartford-East Hartford, CT MSA	110	Capitol PR	4001.02 (Mid)	Berlin	93.95	Middle
CT	25540	Hartford-West Hartford-East Hartford, CT MSA	110	Capitol PR	4002.00 (Upr)	Berlin	136.81	Upper
CT	25540	Hartford-West Hartford-East Hartford, CT MSA	110	Capitol PR	4003.00 (Upr)	Berlin	132.32	Upper
CT	25540	Hartford-West Hartford-East Hartford, CT MSA	110	Capitol PR	4153.00 (Low)	New Britain	31.4	Low
CT	25540	Hartford-West Hartford-East Hartford, CT MSA	110	Capitol PR	4154.00 (Mod)	New Britain	69.44	Moderate
CT	25540	Hartford-West Hartford-East Hartford, CT MSA	110	Capitol PR	4155.00 (Low)	New Britain	48.57	Low
CT	25540	Hartford-West Hartford-East Hartford, CT MSA	110	Capitol PR	4156.00 (Mod)	New Britain	59.18	Moderate
CT	25540	Hartford-West Hartford-East Hartford, CT MSA	110	Capitol PR	4157.00 (Mid)	New Britain	80.05	Middle
CT	25540	Hartford-West Hartford-East Hartford, CT MSA	110	Capitol PR	4158.00 (Low)	New Britain	40.89	Low
CT	25540	Hartford-West Hartford-East Hartford, CT MSA	110	Capitol PR	4159.00 (Low)	New Britain	40.81	Low
CT	25540	Hartford-West Hartford-East Hartford, CT MSA	110	Capitol PR	4160.00 (Low)	New Britain	39.96	Low
CT	25540	Hartford-West Hartford-East Hartford, CT MSA	110	Capitol PR	4161.00 (Low)	New Britain	46.03	Low
CT	25540	Hartford-West Hartford-East Hartford, CT MSA	110	Capitol PR	4162.00 (Low)	New Britain	35.51	Low
CT	25540	Hartford-West Hartford-East Hartford, CT MSA	110	Capitol PR	4163.00 (Low)	New Britain	40.42	Low
CT	25540	Hartford-West Hartford-East Hartford, CT MSA	110	Capitol PR	4164.00 (Mid)	New Britain	108.98	Middle
CT	25540	Hartford-West Hartford-East Hartford, CT MSA	110	Capitol PR	4165.00 (Mod)	New Britain	74.28	Moderate
CT	25540	Hartford-West Hartford-East Hartford, CT MSA	110	Capitol PR	4166.00 (Mod)	New Britain	57.72	Moderate
CT	25540	Hartford-West Hartford-East Hartford, CT MSA	110	Capitol PR	4167.00 (Mod)	New Britain	51.02	Moderate
CT	25540	Hartford-West Hartford-East Hartford, CT MSA	110	Capitol PR	4168.00 (Mod)	New Britain	65.65	Moderate
CT	25540	Hartford-West Hartford-East Hartford, CT MSA	110	Capitol PR	4171.00 (Low)	New Britain	31.16	Low
CT	25540	Hartford-West Hartford-East Hartford, CT MSA	110	Capitol PR	4172.00 (Mod)	New Britain	55.1	Moderate
CT	25540	Hartford-West Hartford-East Hartford, CT MSA	110	Capitol PR	4173.00 ()	New Britain	0	NA
CT	25540	Hartford-West Hartford-East Hartford, CT MSA	110	Capitol PR	4174.00 (Mid)	New Britain	85.49	Middle
CT	25540	Hartford-West Hartford-East Hartford, CT MSA	110	Capitol PR	4175.00 (Mod)	New Britain	79.34	Moderate
CT	25540	Hartford-West Hartford-East Hartford, CT MSA	110	Capitol PR	4204.00 (Mid)	Plainville	100.24	Middle
CT	25540	Hartford-West Hartford-East Hartford, CT MSA	110	Capitol PR	4205.00 (Mod)	Plainville	70.77	Moderate
CT	25540	Hartford-West Hartford-East Hartford, CT MSA	110	Capitol PR	4206.01 (Mod)	Plainville	75.97	Moderate
CT	25540	Hartford-West Hartford-East Hartford, CT MSA	110	Capitol PR	4206.02 (Mid)	Plainville	102.18	Middle
CT	25540	Hartford-West Hartford-East Hartford, CT MSA	110	Capitol PR	4207.00 (Mid)	Plainville	87.96	Middle
CT	25540	Hartford-West Hartford-East Hartford, CT MSA	110	Capitol PR	4301.00 (Mid)	Southington	84.94	Middle

State	MSA Code	MSA Name	County Code	County Name	Census Tract	City/Town	Income as % of MSA Median	Income Category
CT	25540	Hartford-West Hartford-East Hartford, CT MSA	110	Capitol PR	4302.01 (Mid)	Southington	109.96	Middle
CT	25540	Hartford-West Hartford-East Hartford, CT MSA	110	Capitol PR	4302.02 (Upr)	Southington	136.71	Upper
CT	25540	Hartford-West Hartford-East Hartford, CT MSA	110	Capitol PR	4302.03 (Mid)	Southington	113.83	Middle
CT	25540	Hartford-West Hartford-East Hartford, CT MSA	110	Capitol PR	4303.01 (Upr)	Southington	131.46	Upper
CT	25540	Hartford-West Hartford-East Hartford, CT MSA	110	Capitol PR	4303.02 (Mid)	Southington	82.75	Middle
CT	25540	Hartford-West Hartford-East Hartford, CT MSA	110	Capitol PR	4304.00 (Mid)	Southington	102.59	Middle
CT	25540	Hartford-West Hartford-East Hartford, CT MSA	110	Capitol PR	4305.01 (Mod)	Southington	75.92	Moderate
CT	25540	Hartford-West Hartford-East Hartford, CT MSA	110	Capitol PR	4305.02 (Upr)	Southington	146.63	Upper
CT	25540	Hartford-West Hartford-East Hartford, CT MSA	110	Capitol PR	4306.02 (Upr)	Southington	128.94	Upper
CT	25540	Hartford-West Hartford-East Hartford, CT MSA	110	Capitol PR	4306.03 (Mid)	Southington	119.32	Middle
CT	25540	Hartford-West Hartford-East Hartford, CT MSA	110	Capitol PR	4306.04 (Mid)	Southington	108.83	Middle
CT	25540	Hartford-West Hartford-East Hartford, CT MSA	110	Capitol PR	4601.00 (Upr)	Farmington	136.77	Upper
CT	25540	Hartford-West Hartford-East Hartford, CT MSA	110	Capitol PR	4602.02 (Upr)	Farmington	138.05	Upper
CT	25540	Hartford-West Hartford-East Hartford, CT MSA	110	Capitol PR	4602.03 (Mid)	Farmington	116.06	Middle
CT	25540	Hartford-West Hartford-East Hartford, CT MSA	110	Capitol PR	4602.04 (Mid)	Farmington	100.67	Middle
CT	25540	Hartford-West Hartford-East Hartford, CT MSA	110	Capitol PR	4603.01 (Upr)	Farmington	129.75	Upper
CT	25540	Hartford-West Hartford-East Hartford, CT MSA	110	Capitol PR	4603.02 (Upr)	Farmington	136.32	Upper
CT	25540	Hartford-West Hartford-East Hartford, CT MSA	110	Capitol PR	4621.01 (Upr)	Avon	135.44	Upper
CT	25540	Hartford-West Hartford-East Hartford, CT MSA	110	Capitol PR	4621.02 (Upr)	Avon	213.55	Upper
CT	25540	Hartford-West Hartford-East Hartford, CT MSA	110	Capitol PR	4622.01 (Upr)	Avon	127.24	Upper
CT	25540	Hartford-West Hartford-East Hartford, CT MSA	110	Capitol PR	4622.02 (Upr)	Avon	172.13	Upper
CT	25540	Hartford-West Hartford-East Hartford, CT MSA	110	Capitol PR	4641.01 (Upr)	Canton	123.27	Upper
CT	25540	Hartford-West Hartford-East Hartford, CT MSA	110	Capitol PR	4641.02 (Mid)	Canton	113.7	Middle
CT	25540	Hartford-West Hartford-East Hartford, CT MSA	110	Capitol PR	4661.01 (Upr)	Simsbury	151.94	Upper
CT	25540	Hartford-West Hartford-East Hartford, CT MSA	110	Capitol PR	4661.02 (Upr)	Simsbury	162.86	Upper
CT	25540	Hartford-West Hartford-East Hartford, CT MSA	110	Capitol PR	4662.01 (Mid)	Simsbury	114.28	Middle
CT	25540	Hartford-West Hartford-East Hartford, CT MSA	110	Capitol PR	4662.02 (Upr)	Simsbury	175.63	Upper
CT	25540	Hartford-West Hartford-East Hartford, CT MSA	110	Capitol PR	4663.00 (Upr)	Simsbury	158.57	Upper
CT	25540	Hartford-West Hartford-East Hartford, CT MSA	110	Capitol PR	4664.00 (Upr)	Simsbury	132.41	Upper
CT	25540	Hartford-West Hartford-East Hartford, CT MSA	110	Capitol PR	4681.01 (Upr)	Granby	131.15	Upper
CT	25540	Hartford-West Hartford-East Hartford, CT MSA	110	Capitol PR	4681.02 (Upr)	Granby	144.73	Upper

State	MSA Code	MSA Name	County Code	County Name	Census Tract	City/Town	Income as % of MSA Median	Income Category
CT	25540	Hartford-West Hartford-East Hartford, CT MSA	110	Capitol PR	4701.00 (Mid)	East Granby	104.9	Middle
CT	25540	Hartford-West Hartford-East Hartford, CT MSA	110	Capitol PR	4711.00 (Mod)	Bloomfield	69.38	Moderate
CT	25540	Hartford-West Hartford-East Hartford, CT MSA	110	Capitol PR	4712.00 (Mod)	Bloomfield	77.31	Moderate
CT	25540	Hartford-West Hartford-East Hartford, CT MSA	110	Capitol PR	4713.00 (Mid)	Bloomfield	100.55	Middle
CT	25540	Hartford-West Hartford-East Hartford, CT MSA	110	Capitol PR	4714.00 (Upr)	Bloomfield	128.65	Upper
CT	25540	Hartford-West Hartford-East Hartford, CT MSA	110	Capitol PR	4715.00 (Mid)	Bloomfield	92.7	Middle
CT	25540	Hartford-West Hartford-East Hartford, CT MSA	110	Capitol PR	4731.00 (Mid)	Windsor	106.43	Middle
CT	25540	Hartford-West Hartford-East Hartford, CT MSA	110	Capitol PR	4734.00 (Mid)	Windsor	98.17	Middle
CT	25540	Hartford-West Hartford-East Hartford, CT MSA	110	Capitol PR	4735.01 (Mid)	Windsor	117.96	Middle
CT	25540	Hartford-West Hartford-East Hartford, CT MSA	110	Capitol PR	4735.02 (Mid)	Windsor	89.62	Middle
CT	25540	Hartford-West Hartford-East Hartford, CT MSA	110	Capitol PR	4736.01 (Upr)	Windsor	121.07	Upper
CT	25540	Hartford-West Hartford-East Hartford, CT MSA	110	Capitol PR	4736.02 (Mid)	Windsor	83.72	Middle
CT	25540	Hartford-West Hartford-East Hartford, CT MSA	110	Capitol PR	4737.00 (Mid)	Windsor	104.28	Middle
CT	25540	Hartford-West Hartford-East Hartford, CT MSA	110	Capitol PR	4738.00 (Mid)	Windsor	98.72	Middle
CT	25540	Hartford-West Hartford-East Hartford, CT MSA	110	Capitol PR	4761.00 (Mid)	Windsor Locks	90.49	Middle
CT	25540	Hartford-West Hartford-East Hartford, CT MSA	110	Capitol PR	4762.00 (Mid)	Windsor Locks	98.57	Middle
CT	25540	Hartford-West Hartford-East Hartford, CT MSA	110	Capitol PR	4763.00 (Mid)	Windsor Locks	89.06	Middle
CT	25540	Hartford-West Hartford-East Hartford, CT MSA	110	Capitol PR	4771.01 (Upr)	Suffield	122.41	Upper
CT	25540	Hartford-West Hartford-East Hartford, CT MSA	110	Capitol PR	4771.03 (Upr)	Suffield	134.19	Upper
CT	25540	Hartford-West Hartford-East Hartford, CT MSA	110	Capitol PR	4771.04 (Upr)	Suffield	141.95	Upper
CT	25540	Hartford-West Hartford-East Hartford, CT MSA	110	Capitol PR	4772.00 (Upr)	Suffield	127.92	Upper
CT	25540	Hartford-West Hartford-East Hartford, CT MSA	110	Capitol PR	4803.00 (Mid)	Enfield	81.32	Middle
CT	25540	Hartford-West Hartford-East Hartford, CT MSA	110	Capitol PR	4804.00 (Mid)	Enfield	90.08	Middle
CT	25540	Hartford-West Hartford-East Hartford, CT MSA	110	Capitol PR	4805.00 (Mid)	Enfield	96.61	Middle
CT	25540	Hartford-West Hartford-East Hartford, CT MSA	110	Capitol PR	4806.00 (Mod)	Enfield	58.32	Moderate
CT	25540	Hartford-West Hartford-East Hartford, CT MSA	110	Capitol PR	4807.00 (Mod)	Enfield	50.98	Moderate
CT	25540	Hartford-West Hartford-East Hartford, CT MSA	110	Capitol PR	4808.00 (Mid)	Enfield	92.85	Middle
CT	25540	Hartford-West Hartford-East Hartford, CT MSA	110	Capitol PR	4809.00 (Upr)	Enfield	134.22	Upper
CT	25540	Hartford-West Hartford-East Hartford, CT MSA	110	Capitol PR	4810.00 (Upr)	Enfield	130.07	Upper
CT	25540	Hartford-West Hartford-East Hartford, CT MSA	110	Capitol PR	4811.00 (Mid)	Enfield	96.45	Middle
CT	25540	Hartford-West Hartford-East Hartford, CT MSA	110	Capitol PR	4812.00 (Mid)	Enfield	100	Middle

State	MSA Code	MSA Name	County Code	County Name	Census Tract	City/Town	Income as % of MSA Median	Income Category
CT	25540	Hartford-West Hartford-East Hartford, CT MSA	110	Capitol PR	4813.00 (Mid)	Enfield	104.08	Middle
CT	25540	Hartford-West Hartford-East Hartford, CT MSA	110	Capitol PR	4841.00 (Mid)	East Windsor	85.74	Middle
CT	25540	Hartford-West Hartford-East Hartford, CT MSA	110	Capitol PR	4842.00 (Mid)	East Windsor	112.04	Middle
CT	25540	Hartford-West Hartford-East Hartford, CT MSA	110	Capitol PR	4871.00 (Upr)	South Windsor	136.09	Upper
CT	25540	Hartford-West Hartford-East Hartford, CT MSA	110	Capitol PR	4872.01 (Upr)	South Windsor	135.35	Upper
CT	25540	Hartford-West Hartford-East Hartford, CT MSA	110	Capitol PR	4872.02 (Upr)	South Windsor	187.06	Upper
CT	25540	Hartford-West Hartford-East Hartford, CT MSA	110	Capitol PR	4873.00 (Upr)	South Windsor	130.5	Upper
CT	25540	Hartford-West Hartford-East Hartford, CT MSA	110	Capitol PR	4874.00 (Upr)	South Windsor	138.7	Upper
CT	25540	Hartford-West Hartford-East Hartford, CT MSA	110	Capitol PR	4875.00 (Upr)	South Windsor	123.23	Upper
CT	25540	Hartford-West Hartford-East Hartford, CT MSA	110	Capitol PR	4901.00 (Mid)	Rocky Hill	86.68	Middle
CT	25540	Hartford-West Hartford-East Hartford, CT MSA	110	Capitol PR	4903.03 (Mid)	Rocky Hill	103.05	Middle
CT	25540	Hartford-West Hartford-East Hartford, CT MSA	110	Capitol PR	4903.04 (Mid)	Rocky Hill	114.2	Middle
CT	25540	Hartford-West Hartford-East Hartford, CT MSA	110	Capitol PR	4921.00 (Upr)	Wethersfield	147.29	Upper
CT	25540	Hartford-West Hartford-East Hartford, CT MSA	110	Capitol PR	4922.00 (Mid)	Wethersfield	119.36	Middle
CT	25540	Hartford-West Hartford-East Hartford, CT MSA	110	Capitol PR	4923.00 (Mid)	Wethersfield	82.04	Middle
CT	25540	Hartford-West Hartford-East Hartford, CT MSA	110	Capitol PR	4924.00 (Mid)	Wethersfield	99.18	Middle
CT	25540	Hartford-West Hartford-East Hartford, CT MSA	110	Capitol PR	4925.00 (Upr)	Wethersfield	130.01	Upper
CT	25540	Hartford-West Hartford-East Hartford, CT MSA	110	Capitol PR	4926.00 (Mid)	Wethersfield	116.22	Middle
CT	25540	Hartford-West Hartford-East Hartford, CT MSA	110	Capitol PR	4941.00 (Mid)	Newington	87.36	Middle
CT	25540	Hartford-West Hartford-East Hartford, CT MSA	110	Capitol PR	4942.01 (Mid)	Newington	85.41	Middle
CT	25540	Hartford-West Hartford-East Hartford, CT MSA	110	Capitol PR	4942.02 (Upr)	Newington	123.18	Upper
CT	25540	Hartford-West Hartford-East Hartford, CT MSA	110	Capitol PR	4943.00 (Mid)	Newington	104.95	Middle
CT	25540	Hartford-West Hartford-East Hartford, CT MSA	110	Capitol PR	4944.00 (Mid)	Newington	112.93	Middle
CT	25540	Hartford-West Hartford-East Hartford, CT MSA	110	Capitol PR	4945.00 (Mid)	Newington	92.97	Middle
CT	25540	Hartford-West Hartford-East Hartford, CT MSA	110	Capitol PR	4946.00 (Mid)	Newington	91.05	Middle
CT	25540	Hartford-West Hartford-East Hartford, CT MSA	110	Capitol PR	4961.00 (Mod)	West Hartford	58.3	Moderate
CT	25540	Hartford-West Hartford-East Hartford, CT MSA	110	Capitol PR	4962.00 (Mid)	West Hartford	101.71	Middle
CT	25540	Hartford-West Hartford-East Hartford, CT MSA	110	Capitol PR	4963.00 (Mid)	West Hartford	114.73	Middle
CT	25540	Hartford-West Hartford-East Hartford, CT MSA	110	Capitol PR	4964.00 (Upr)	West Hartford	173.42	Upper
CT	25540	Hartford-West Hartford-East Hartford, CT MSA	110	Capitol PR	4965.00 (Upr)	West Hartford	168.73	Upper
CT	25540	Hartford-West Hartford-East Hartford, CT MSA	110	Capitol PR	4966.00 (Upr)	West Hartford	154.81	Upper

State	MSA Code	MSA Name	County Code	County Name	Census Tract	City/Town	Income as % of MSA Median	Income Category
CT	25540	Hartford-West Hartford-East Hartford, CT MSA	110	Capitol PR	4967.00 (Mid)	West Hartford	93.86	Middle
CT	25540	Hartford-West Hartford-East Hartford, CT MSA	110	Capitol PR	4968.00 (Mid)	West Hartford	84.11	Middle
CT	25540	Hartford-West Hartford-East Hartford, CT MSA	110	Capitol PR	4969.00 (Mid)	West Hartford	111.39	Middle
CT	25540	Hartford-West Hartford-East Hartford, CT MSA	110	Capitol PR	4970.00 (Upr)	West Hartford	199.42	Upper
CT	25540	Hartford-West Hartford-East Hartford, CT MSA	110	Capitol PR	4971.00 (Mid)	West Hartford	110.29	Middle
CT	25540	Hartford-West Hartford-East Hartford, CT MSA	110	Capitol PR	4972.00 (Upr)	West Hartford	168.88	Upper
CT	25540	Hartford-West Hartford-East Hartford, CT MSA	110	Capitol PR	4973.00 (Upr)	West Hartford	164.57	Upper
CT	25540	Hartford-West Hartford-East Hartford, CT MSA	110	Capitol PR	4974.00 (Upr)	West Hartford	209.39	Upper
CT	25540	Hartford-West Hartford-East Hartford, CT MSA	110	Capitol PR	4975.00 (Upr)	West Hartford	165.3	Upper
CT	25540	Hartford-West Hartford-East Hartford, CT MSA	110	Capitol PR	4976.00 (Upr)	West Hartford	139.81	Upper
CT	25540	Hartford-West Hartford-East Hartford, CT MSA	110	Capitol PR	4977.00 (Upr)	West Hartford	177.62	Upper
CT	25540	Hartford-West Hartford-East Hartford, CT MSA	110	Capitol PR	5001.00 (Low)	Hartford	28.84	Low
CT	25540	Hartford-West Hartford-East Hartford, CT MSA	110	Capitol PR	5002.00 (Low)	Hartford	29.72	Low
CT	25540	Hartford-West Hartford-East Hartford, CT MSA	110	Capitol PR	5003.00 (Low)	Hartford	26.67	Low
CT	25540	Hartford-West Hartford-East Hartford, CT MSA	110	Capitol PR	5004.00 (Low)	Hartford	44.38	Low
CT	25540	Hartford-West Hartford-East Hartford, CT MSA	110	Capitol PR	5005.00 (Mod)	Hartford	64.4	Moderate
CT	25540	Hartford-West Hartford-East Hartford, CT MSA	110	Capitol PR	5009.00 (Low)	Hartford	21.85	Low
CT	25540	Hartford-West Hartford-East Hartford, CT MSA	110	Capitol PR	5012.00 (Low)	Hartford	22.16	Low
CT	25540	Hartford-West Hartford-East Hartford, CT MSA	110	Capitol PR	5013.00 (Low)	Hartford	37.62	Low
CT	25540	Hartford-West Hartford-East Hartford, CT MSA	110	Capitol PR	5014.00 (Low)	Hartford	40.33	Low
CT	25540	Hartford-West Hartford-East Hartford, CT MSA	110	Capitol PR	5015.00 (Low)	Hartford	35.62	Low
CT	25540	Hartford-West Hartford-East Hartford, CT MSA	110	Capitol PR	5017.00 (Low)	Hartford	27.03	Low
CT	25540	Hartford-West Hartford-East Hartford, CT MSA	110	Capitol PR	5018.00 (Low)	Hartford	15.59	Low
CT	25540	Hartford-West Hartford-East Hartford, CT MSA	110	Capitol PR	5021.00 (Mid)	Hartford	116.9	Middle
CT	25540	Hartford-West Hartford-East Hartford, CT MSA	110	Capitol PR	5023.00 (Mod)	Hartford	55.34	Moderate
CT	25540	Hartford-West Hartford-East Hartford, CT MSA	110	Capitol PR	5024.00 (Low)	Hartford	40.73	Low
CT	25540	Hartford-West Hartford-East Hartford, CT MSA	110	Capitol PR	5025.00 (Mod)	Hartford	51.42	Moderate
CT	25540	Hartford-West Hartford-East Hartford, CT MSA	110	Capitol PR	5026.00 (Mod)	Hartford	50.43	Moderate
CT	25540	Hartford-West Hartford-East Hartford, CT MSA	110	Capitol PR	5027.00 (Low)	Hartford	35.51	Low
CT	25540	Hartford-West Hartford-East Hartford, CT MSA	110	Capitol PR	5028.00 (Low)	Hartford	28.44	Low
CT	25540	Hartford-West Hartford-East Hartford, CT MSA	110	Capitol PR	5029.00 (Mod)	Hartford	67.1	Moderate

State	MSA Code	MSA Name	County Code	County Name	Census Tract	City/Town	Income as % of MSA Median	Income Category
CT	25540	Hartford-West Hartford-East Hartford, CT MSA	110	Capitol PR	5030.00 (Low)	Hartford	31.65	Low
CT	25540	Hartford-West Hartford-East Hartford, CT MSA	110	Capitol PR	5031.01 (Low)	Hartford	28.82	Low
CT	25540	Hartford-West Hartford-East Hartford, CT MSA	110	Capitol PR	5031.02 (Mod)	Hartford	61.53	Moderate
CT	25540	Hartford-West Hartford-East Hartford, CT MSA	110	Capitol PR	5033.00 (Low)	Hartford	36.06	Low
CT	25540	Hartford-West Hartford-East Hartford, CT MSA	110	Capitol PR	5035.00 (Low)	Hartford	36.56	Low
CT	25540	Hartford-West Hartford-East Hartford, CT MSA	110	Capitol PR	5037.00 (Low)	Hartford	37.34	Low
CT	25540	Hartford-West Hartford-East Hartford, CT MSA	110	Capitol PR	5038.00 ()	Hartford	0	NA
CT	25540	Hartford-West Hartford-East Hartford, CT MSA	110	Capitol PR	5039.00 (Mod)	Hartford	63.57	Moderate
CT	25540	Hartford-West Hartford-East Hartford, CT MSA	110	Capitol PR	5040.00 (Mod)	Hartford	65.38	Moderate
CT	25540	Hartford-West Hartford-East Hartford, CT MSA	110	Capitol PR	5041.00 (Low)	Hartford	19.23	Low
CT	25540	Hartford-West Hartford-East Hartford, CT MSA	110	Capitol PR	5042.00 (Low)	Hartford	30.21	Low
CT	25540	Hartford-West Hartford-East Hartford, CT MSA	110	Capitol PR	5043.00 (Low)	Hartford	27.59	Low
CT	25540	Hartford-West Hartford-East Hartford, CT MSA	110	Capitol PR	5045.00 (Low)	Hartford	42.24	Low
CT	25540	Hartford-West Hartford-East Hartford, CT MSA	110	Capitol PR	5048.00 (Mod)	Hartford	63.62	Moderate
CT	25540	Hartford-West Hartford-East Hartford, CT MSA	110	Capitol PR	5049.00 (Low)	Hartford	44.15	Low
CT	25540	Hartford-West Hartford-East Hartford, CT MSA	110	Capitol PR	5101.00 (Mid)	East Hartford	80.94	Middle
CT	25540	Hartford-West Hartford-East Hartford, CT MSA	110	Capitol PR	5102.00 (Mod)	East Hartford	58.49	Moderate
CT	25540	Hartford-West Hartford-East Hartford, CT MSA	110	Capitol PR	5103.00 (Mod)	East Hartford	51.78	Moderate
CT	25540	Hartford-West Hartford-East Hartford, CT MSA	110	Capitol PR	5104.00 (Mod)	East Hartford	53.58	Moderate
CT	25540	Hartford-West Hartford-East Hartford, CT MSA	110	Capitol PR	5105.00 (Mod)	East Hartford	65.51	Moderate
CT	25540	Hartford-West Hartford-East Hartford, CT MSA	110	Capitol PR	5106.00 (Low)	East Hartford	48.04	Low
CT	25540	Hartford-West Hartford-East Hartford, CT MSA	110	Capitol PR	5107.00 (Mod)	East Hartford	70.65	Moderate
CT	25540	Hartford-West Hartford-East Hartford, CT MSA	110	Capitol PR	5108.00 (Mod)	East Hartford	64.89	Moderate
CT	25540	Hartford-West Hartford-East Hartford, CT MSA	110	Capitol PR	5109.00 (Mid)	East Hartford	99.18	Middle
CT	25540	Hartford-West Hartford-East Hartford, CT MSA	110	Capitol PR	5110.00 (Mid)	East Hartford	118.86	Middle
CT	25540	Hartford-West Hartford-East Hartford, CT MSA	110	Capitol PR	5111.00 (Mid)	East Hartford	103.17	Middle
CT	25540	Hartford-West Hartford-East Hartford, CT MSA	110	Capitol PR	5112.00 (Mod)	East Hartford	79.55	Moderate
CT	25540	Hartford-West Hartford-East Hartford, CT MSA	110	Capitol PR	5113.00 (Low)	East Hartford	38.41	Low
CT	25540	Hartford-West Hartford-East Hartford, CT MSA	110	Capitol PR	5114.00 (Mid)	East Hartford	90.15	Middle
CT	25540	Hartford-West Hartford-East Hartford, CT MSA	110	Capitol PR	5141.01 (Mid)	Manchester	118.07	Middle
CT	25540	Hartford-West Hartford-East Hartford, CT MSA	110	Capitol PR	5141.03 (Mid)	Manchester	96.36	Middle

State	MSA Code	MSA Name	County Code	County Name	Census Tract	City/Town	Income as % of MSA Median	Income Category
CT	25540	Hartford-West Hartford-East Hartford, CT MSA	110	Capitol PR	5141.04 (Mid)	Manchester	83.44	Middle
CT	25540	Hartford-West Hartford-East Hartford, CT MSA	110	Capitol PR	5142.00 (Mod)	Manchester	71.34	Moderate
CT	25540	Hartford-West Hartford-East Hartford, CT MSA	110	Capitol PR	5143.00 (Mid)	Manchester	93.25	Middle
CT	25540	Hartford-West Hartford-East Hartford, CT MSA	110	Capitol PR	5144.00 (Mod)	Manchester	63.13	Moderate
CT	25540	Hartford-West Hartford-East Hartford, CT MSA	110	Capitol PR	5145.00 (Mod)	Manchester	74.69	Moderate
CT	25540	Hartford-West Hartford-East Hartford, CT MSA	110	Capitol PR	5146.00 (Mod)	Manchester	66.32	Moderate
CT	25540	Hartford-West Hartford-East Hartford, CT MSA	110	Capitol PR	5147.00 (Low)	Manchester	36.06	Low
CT	25540	Hartford-West Hartford-East Hartford, CT MSA	110	Capitol PR	5148.00 (Low)	Manchester	48.63	Low
CT	25540	Hartford-West Hartford-East Hartford, CT MSA	110	Capitol PR	5149.00 (Mid)	Manchester	99.47	Middle
CT	25540	Hartford-West Hartford-East Hartford, CT MSA	110	Capitol PR	5150.00 (Mid)	Manchester	100.16	Middle
CT	25540	Hartford-West Hartford-East Hartford, CT MSA	110	Capitol PR	5151.01 (Upr)	Manchester	120.98	Upper
CT	25540	Hartford-West Hartford-East Hartford, CT MSA	110	Capitol PR	5151.02 (Mod)	Manchester	79.91	Moderate
CT	25540	Hartford-West Hartford-East Hartford, CT MSA	110	Capitol PR	5152.00 (Mid)	Manchester	111.84	Middle
CT	25540	Hartford-West Hartford-East Hartford, CT MSA	110	Capitol PR	5201.00 (Upr)	Glastonbury	146.5	Upper
CT	25540	Hartford-West Hartford-East Hartford, CT MSA	110	Capitol PR	5202.01 (Upr)	Glastonbury	181.33	Upper
CT	25540	Hartford-West Hartford-East Hartford, CT MSA	110	Capitol PR	5202.02 (Upr)	Glastonbury	174.1	Upper
CT	25540	Hartford-West Hartford-East Hartford, CT MSA	110	Capitol PR	5203.01 (Mid)	Glastonbury	116.6	Middle
CT	25540	Hartford-West Hartford-East Hartford, CT MSA	110	Capitol PR	5203.02 (Mid)	Glastonbury	104.86	Middle
CT	25540	Hartford-West Hartford-East Hartford, CT MSA	110	Capitol PR	5204.00 (Upr)	Glastonbury	139.29	Upper
CT	25540	Hartford-West Hartford-East Hartford, CT MSA	110	Capitol PR	5205.01 (Upr)	Glastonbury	174.62	Upper
CT	25540	Hartford-West Hartford-East Hartford, CT MSA	110	Capitol PR	5241.00 (Upr)	Marlborough	128.28	Upper
CT	25540	Hartford-West Hartford-East Hartford, CT MSA	110	Capitol PR	5242.00 (Mid)	Rocky Hill	107.95	Middle
CT	25540	Hartford-West Hartford-East Hartford, CT MSA	110	Capitol PR	5243.00 (Mid)	Enfield	94.88	Middle
CT	25540	Hartford-West Hartford-East Hartford, CT MSA	110	Capitol PR	5244.00 (Mod)	Hartford	51.55	Moderate
CT	25540	Hartford-West Hartford-East Hartford, CT MSA	110	Capitol PR	5245.01 (Low)	Hartford	44.86	Low
CT	25540	Hartford-West Hartford-East Hartford, CT MSA	110	Capitol PR	5245.02 (Upr)	Hartford	223.47	Upper
CT	25540	Hartford-West Hartford-East Hartford, CT MSA	110	Capitol PR	5246.00 (Low)	Hartford	38.76	Low
CT	25540	Hartford-West Hartford-East Hartford, CT MSA	110	Capitol PR	5247.00 (Mod)	Hartford	74.32	Moderate
CT	25540	Hartford-West Hartford-East Hartford, CT MSA	110	Capitol PR	5261.01 (Upr)	Hebron	129.49	Upper
CT	25540	Hartford-West Hartford-East Hartford, CT MSA	110	Capitol PR	5261.02 (Upr)	Hebron	136.57	Upper
CT	25540	Hartford-West Hartford-East Hartford, CT MSA	110	Capitol PR	5281.00 (Mid)	Andover	107.61	Middle

State	MSA Code	MSA Name	County Code	County Name	Census Tract	City/Town	Income as % of MSA Median	Income Category
CT	25540	Hartford-West Hartford-East Hartford, CT MSA	110	Capitol PR	5291.00 (Upr)	Bolton	130.31	Upper
CT	25540	Hartford-West Hartford-East Hartford, CT MSA	110	Capitol PR	5301.00 (Mod)	Vernon	55.34	Moderate
CT	25540	Hartford-West Hartford-East Hartford, CT MSA	110	Capitol PR	5302.00 (Mod)	Vernon	56.72	Moderate
CT	25540	Hartford-West Hartford-East Hartford, CT MSA	110	Capitol PR	5303.01 (Mod)	Vernon	67.63	Moderate
CT	25540	Hartford-West Hartford-East Hartford, CT MSA	110	Capitol PR	5303.02 (Mid)	Vernon	110.59	Middle
CT	25540	Hartford-West Hartford-East Hartford, CT MSA	110	Capitol PR	5304.00 (Mid)	Vernon	92.18	Middle
CT	25540	Hartford-West Hartford-East Hartford, CT MSA	110	Capitol PR	5305.00 (Mid)	Vernon	109.85	Middle
CT	25540	Hartford-West Hartford-East Hartford, CT MSA	110	Capitol PR	5306.00 (Mid)	Vernon	114.33	Middle
CT	25540	Hartford-West Hartford-East Hartford, CT MSA	110	Capitol PR	5331.02 (Upr)	Tolland	139.89	Upper
CT	25540	Hartford-West Hartford-East Hartford, CT MSA	110	Capitol PR	5331.03 (Mid)	Tolland	107.44	Middle
CT	25540	Hartford-West Hartford-East Hartford, CT MSA	110	Capitol PR	5331.04 (Upr)	Tolland	165.12	Upper
CT	25540	Hartford-West Hartford-East Hartford, CT MSA	110	Capitol PR	5351.01 (Upr)	Ellington	132.92	Upper
CT	25540	Hartford-West Hartford-East Hartford, CT MSA	110	Capitol PR	5351.02 (Mid)	Ellington	101.54	Middle
CT	25540	Hartford-West Hartford-East Hartford, CT MSA	110	Capitol PR	5352.00 (Mid)	Ellington	119.21	Middle
CT	25540	Hartford-West Hartford-East Hartford, CT MSA	110	Capitol PR	5381.00 ()	Somers	0	NA
CT	25540	Hartford-West Hartford-East Hartford, CT MSA	110	Capitol PR	5382.01 (Mid)	Somers	119.75	Middle
CT	25540	Hartford-West Hartford-East Hartford, CT MSA	110	Capitol PR	5382.02 (Upr)	Somers	120.19	Upper
CT	25540	Hartford-West Hartford-East Hartford, CT MSA	110	Capitol PR	8401.00 (Mid)	Willington	108.84	Middle
CT	25540	Hartford-West Hartford-East Hartford, CT MSA	110	Capitol PR	8501.00 (Mid)	Coventry	109.68	Middle
CT	25540	Hartford-West Hartford-East Hartford, CT MSA	110	Capitol PR	8502.00 (Mid)	Coventry	119.56	Middle
CT	25540	Hartford-West Hartford-East Hartford, CT MSA	110	Capitol PR	8601.00 (Mid)	Columbia	104.03	Middle
CT	25540	Hartford-West Hartford-East Hartford, CT MSA	110	Capitol PR	8811.00 (Mid)	Mansfield	112.37	Middle
CT	25540	Hartford-West Hartford-East Hartford, CT MSA	110	Capitol PR	8812.00 (Upr)	Mansfield	167.45	Upper
CT	25540	Hartford-West Hartford-East Hartford, CT MSA	110	Capitol PR	8813.00 (Mid)	Mansfield	82.45	Middle
CT	25540	Hartford-West Hartford-East Hartford, CT MSA	110	Capitol PR	8815.00 (Upr)	Mansfield	124.02	Upper
CT	25540	Hartford-West Hartford-East Hartford, CT MSA	110	Capitol PR	8901.00 (Mod)	Stafford	76.53	Moderate
CT	25540	Hartford-West Hartford-East Hartford, CT MSA	110	Capitol PR	8902.02 (Mid)	Stafford	118.04	Middle
CT	25540	Hartford-West Hartford-East Hartford, CT MSA	110	Capitol PR	8902.04 (Mid)	Stafford	96.73	Middle
CT	25540	Hartford-West Hartford-East Hartford, CT MSA	110	Capitol PR	9800.01 ()	East Granby	0	NA
CT	25540	Hartford-West Hartford-East Hartford, CT MSA	110	Capitol PR	9800.02 ()	Windsor Locks	0	NA
CT	25540	Hartford-West Hartford-East Hartford, CT MSA	110	Capitol PR	9800.03 ()	Suffield	0	NA

State	MSA Code	MSA Name	County Code	County Name	Census Tract	City/Town	Income as % of MSA Median	Income Category
CT	25540	Hartford-West Hartford-East Hartford, CT MSA	110	Capitol PR	9801.00 ()	Hartford	0	NA
CT	25540	Hartford-West Hartford-East Hartford, CT MSA	130	Lower CT River Valley PR	5411.00 (Low)	Middletown	47.19	Low
CT	25540	Hartford-West Hartford-East Hartford, CT MSA	130	Lower CT River Valley PR	5412.00 (Mid)	Middletown	80.7	Middle
CT	25540	Hartford-West Hartford-East Hartford, CT MSA	130	Lower CT River Valley PR	5413.01 (Mod)	Middletown	68.98	Moderate
CT	25540	Hartford-West Hartford-East Hartford, CT MSA	130	Lower CT River Valley PR	5413.02 (Mod)	Middletown	78.49	Moderate
CT	25540	Hartford-West Hartford-East Hartford, CT MSA	130	Lower CT River Valley PR	5414.01 (Upr)	Middletown	135.72	Upper
CT	25540	Hartford-West Hartford-East Hartford, CT MSA	130	Lower CT River Valley PR	5414.02 (Mid)	Middletown	93.67	Middle
CT	25540	Hartford-West Hartford-East Hartford, CT MSA	130	Lower CT River Valley PR	5415.00 (Mid)	Middletown	90.77	Middle
CT	25540	Hartford-West Hartford-East Hartford, CT MSA	130	Lower CT River Valley PR	5416.00 ()	Middletown	0	NA
CT	25540	Hartford-West Hartford-East Hartford, CT MSA	130	Lower CT River Valley PR	5417.00 (Mod)	Middletown	51.54	Moderate
CT	25540	Hartford-West Hartford-East Hartford, CT MSA	130	Lower CT River Valley PR	5420.00 (Mid)	Middletown	84.93	Middle
CT	25540	Hartford-West Hartford-East Hartford, CT MSA	130	Lower CT River Valley PR	5421.00 (Mid)	Middletown	91.69	Middle
CT	25540	Hartford-West Hartford-East Hartford, CT MSA	130	Lower CT River Valley PR	5422.00 (Mid)	Middletown	115.68	Middle
CT	25540	Hartford-West Hartford-East Hartford, CT MSA	130	Lower CT River Valley PR	5501.00 (Mid)	East Hampton	104.33	Middle
CT	25540	Hartford-West Hartford-East Hartford, CT MSA	130	Lower CT River Valley PR	5502.01 (Upr)	East Hampton	129.93	Upper
CT	25540	Hartford-West Hartford-East Hartford, CT MSA	130	Lower CT River Valley PR	5502.02 (Mid)	East Hampton	97.55	Middle
CT	25540	Hartford-West Hartford-East Hartford, CT MSA	130	Lower CT River Valley PR	5601.00 (Upr)	Portland	156.99	Upper
CT	25540	Hartford-West Hartford-East Hartford, CT MSA	130	Lower CT River Valley PR	5602.00 (Mod)	Portland	79.12	Moderate
CT	25540	Hartford-West Hartford-East Hartford, CT MSA	130	Lower CT River Valley PR	5701.00 (Mid)	Cromwell	95.9	Middle
CT	25540	Hartford-West Hartford-East Hartford, CT MSA	130	Lower CT River Valley PR	5702.00 (Upr)	Cromwell	128.49	Upper
CT	25540	Hartford-West Hartford-East Hartford, CT MSA	130	Lower CT River Valley PR	5703.00 (Upr)	Cromwell	124.93	Upper
CT	25540	Hartford-West Hartford-East Hartford, CT MSA	130	Lower CT River Valley PR	5801.00 (Mid)	Middlefield	119.41	Middle
CT	25540	Hartford-West Hartford-East Hartford, CT MSA	130	Lower CT River Valley PR	5851.00 (Upr)	Durham	131.96	Upper
CT	25540	Hartford-West Hartford-East Hartford, CT MSA	130	Lower CT River Valley PR	5901.01 (Mid)	Haddam	113.91	Middle
CT	25540	Hartford-West Hartford-East Hartford, CT MSA	130	Lower CT River Valley PR	5901.02 (Mid)	Haddam	113.88	Middle
CT	25540	Hartford-West Hartford-East Hartford, CT MSA	130	Lower CT River Valley PR	5951.01 (Mid)	East Haddam	118.68	Middle
CT	25540	Hartford-West Hartford-East Hartford, CT MSA	130	Lower CT River Valley PR	5951.02 (Mid)	East Haddam	97.96	Middle
CT	25540	Hartford-West Hartford-East Hartford, CT MSA	130	Lower CT River Valley PR	6001.00 (Mid)	Chester	106.43	Middle
CT	25540	Hartford-West Hartford-East Hartford, CT MSA	130	Lower CT River Valley PR	6101.00 (Mid)	Clinton	94.12	Middle
CT	25540	Hartford-West Hartford-East Hartford, CT MSA	130	Lower CT River Valley PR	6102.00 (Mid)	Clinton	105.3	Middle
CT	25540	Hartford-West Hartford-East Hartford, CT MSA	130	Lower CT River Valley PR	6103.00 (Mid)	Clinton	115.85	Middle

State	MSA Code	MSA Name	County Code	County Name	Census Tract	City/Town	Income as % of MSA Median	Income Category
CT	25540	Hartford-West Hartford-East Hartford, CT MSA	130	Lower CT River Valley PR	6104.00 (Mid)	Clinton	109.31	Middle
CT	25540	Hartford-West Hartford-East Hartford, CT MSA	130	Lower CT River Valley PR	6201.00 (Mid)	Deep River	107.93	Middle
CT	25540	Hartford-West Hartford-East Hartford, CT MSA	130	Lower CT River Valley PR	6301.01 (Mid)	Essex	116.77	Middle
CT	25540	Hartford-West Hartford-East Hartford, CT MSA	130	Lower CT River Valley PR	6301.02 (Upr)	Essex	167.64	Upper
CT	25540	Hartford-West Hartford-East Hartford, CT MSA	130	Lower CT River Valley PR	6401.00 (Upr)	Killingworth	130.79	Upper
CT	25540	Hartford-West Hartford-East Hartford, CT MSA	130	Lower CT River Valley PR	6501.00 (Upr)	Lyme	135.79	Upper
CT	25540	Hartford-West Hartford-East Hartford, CT MSA	130	Lower CT River Valley PR	6601.01 (Upr)	Old Lyme	152.06	Upper
CT	25540	Hartford-West Hartford-East Hartford, CT MSA	130	Lower CT River Valley PR	6601.03 (Mid)	Old Lyme	118.01	Middle
CT	25540	Hartford-West Hartford-East Hartford, CT MSA	130	Lower CT River Valley PR	6601.04 (Upr)	Old Lyme	133.06	Upper
CT	25540	Hartford-West Hartford-East Hartford, CT MSA	130	Lower CT River Valley PR	6701.00 (Upr)	Old Saybrook	121.28	Upper
CT	25540	Hartford-West Hartford-East Hartford, CT MSA	130	Lower CT River Valley PR	6702.00 (Mid)	Old Saybrook	100.85	Middle
CT	25540	Hartford-West Hartford-East Hartford, CT MSA	130	Lower CT River Valley PR	6801.01 (Mid)	Westbrook	114.04	Middle
CT	25540	Hartford-West Hartford-East Hartford, CT MSA	130	Lower CT River Valley PR	6801.02 (Upr)	Westbrook	126.12	Upper
CT	25540	Hartford-West Hartford-East Hartford, CT MSA	130	Lower CT River Valley PR	6802.00 (Mid)	Middletown	85.23	Middle
CT	25540	Hartford-West Hartford-East Hartford, CT MSA	130	Lower CT River Valley PR	9901.00 ()	NA	0	NA
CT	35300	New Haven, CT MSA	170	South Central Connecticut PR	1401.01 (Upr)	New Haven	181.16	Upper
CT	35300	New Haven, CT MSA	170	South Central Connecticut PR	1401.02 (Upr)	New Haven	164.15	Upper
CT	35300	New Haven, CT MSA	170	South Central Connecticut PR	1402.00 (Low)	New Haven	15.28	Low
CT	35300	New Haven, CT MSA	170	South Central Connecticut PR	1403.00 (Low)	New Haven	46.59	Low
CT	35300	New Haven, CT MSA	170	South Central Connecticut PR	1404.00 (Mod)	New Haven	60.55	Moderate
CT	35300	New Haven, CT MSA	170	South Central Connecticut PR	1405.00 (Low)	New Haven	35.77	Low
CT	35300	New Haven, CT MSA	170	South Central Connecticut PR	1406.00 (Low)	New Haven	34.7	Low
CT	35300	New Haven, CT MSA	170	South Central Connecticut PR	1407.00 (Low)	New Haven	34.96	Low
CT	35300	New Haven, CT MSA	170	South Central Connecticut PR	1408.00 (Low)	New Haven	32.3	Low
CT	35300	New Haven, CT MSA	170	South Central Connecticut PR	1409.00 (Mod)	New Haven	56.27	Moderate
CT	35300	New Haven, CT MSA	170	South Central Connecticut PR	1410.00 (Upr)	New Haven	137.15	Upper
CT	35300	New Haven, CT MSA	170	South Central Connecticut PR	1411.00 (Upr)	New Haven	121.8	Upper
CT	35300	New Haven, CT MSA	170	South Central Connecticut PR	1412.00 (Mod)	New Haven	64.08	Moderate
CT	35300	New Haven, CT MSA	170	South Central Connecticut PR	1413.01 (Low)	New Haven	43.61	Low
CT	35300	New Haven, CT MSA	170	South Central Connecticut PR	1414.00 (Mod)	New Haven	58.16	Moderate
CT	35300	New Haven, CT MSA	170	South Central Connecticut PR	1415.00 (Low)	New Haven	36.36	Low

State	MSA Code	MSA Name	County Code	County Name	Census Tract	City/Town	Income as % of MSA Median	Income Category
CT	35300	New Haven, CT MSA	170	South Central Connecticut PR	1416.00 (Low)	New Haven	44.25	Low
CT	35300	New Haven, CT MSA	170	South Central Connecticut PR	1418.00 (Mod)	New Haven	79.65	Moderate
CT	35300	New Haven, CT MSA	170	South Central Connecticut PR	1419.00 (Upr)	New Haven	125.53	Upper
CT	35300	New Haven, CT MSA	170	South Central Connecticut PR	1420.00 (Upr)	New Haven	127.25	Upper
CT	35300	New Haven, CT MSA	170	South Central Connecticut PR	1421.00 (Low)	New Haven	17.04	Low
CT	35300	New Haven, CT MSA	170	South Central Connecticut PR	1422.00 (Upr)	New Haven	148.84	Upper
CT	35300	New Haven, CT MSA	170	South Central Connecticut PR	1423.00 (Low)	New Haven	46.12	Low
CT	35300	New Haven, CT MSA	170	South Central Connecticut PR	1424.00 (Low)	New Haven	43.52	Low
CT	35300	New Haven, CT MSA	170	South Central Connecticut PR	1425.00 (Low)	New Haven	35.57	Low
CT	35300	New Haven, CT MSA	170	South Central Connecticut PR	1426.01 (Mod)	New Haven	69.88	Moderate
CT	35300	New Haven, CT MSA	170	South Central Connecticut PR	1426.04 (Mod)	New Haven	79.34	Moderate
CT	35300	New Haven, CT MSA	170	South Central Connecticut PR	1426.05 (Low)	New Haven	33.5	Low
CT	35300	New Haven, CT MSA	170	South Central Connecticut PR	1427.00 (Low)	New Haven	44.67	Low
CT	35300	New Haven, CT MSA	170	South Central Connecticut PR	1428.00 (Mid)	New Haven	93.67	Middle
CT	35300	New Haven, CT MSA	170	South Central Connecticut PR	1501.00 (Upr)	Milford	132.23	Upper
CT	35300	New Haven, CT MSA	170	South Central Connecticut PR	1502.00 (Mid)	Milford	83.28	Middle
CT	35300	New Haven, CT MSA	170	South Central Connecticut PR	1503.00 (Upr)	Milford	122.26	Upper
CT	35300	New Haven, CT MSA	170	South Central Connecticut PR	1504.00 (Mid)	Milford	97.46	Middle
CT	35300	New Haven, CT MSA	170	South Central Connecticut PR	1505.00 (Upr)	Milford	138.78	Upper
CT	35300	New Haven, CT MSA	170	South Central Connecticut PR	1506.00 (Upr)	Milford	131.31	Upper
CT	35300	New Haven, CT MSA	170	South Central Connecticut PR	1507.00 (Upr)	Milford	156.55	Upper
CT	35300	New Haven, CT MSA	170	South Central Connecticut PR	1508.00 (Upr)	Milford	131.03	Upper
CT	35300	New Haven, CT MSA	170	South Central Connecticut PR	1509.00 (Upr)	Milford	141.64	Upper
CT	35300	New Haven, CT MSA	170	South Central Connecticut PR	1510.00 (Upr)	Milford	123.53	Upper
CT	35300	New Haven, CT MSA	170	South Central Connecticut PR	1511.00 (Upr)	Milford	141.61	Upper
CT	35300	New Haven, CT MSA	170	South Central Connecticut PR	1512.00 (Mid)	Milford	114.24	Middle
CT	35300	New Haven, CT MSA	170	South Central Connecticut PR	1541.01 (Mod)	West Haven	64.06	Moderate
CT	35300	New Haven, CT MSA	170	South Central Connecticut PR	1541.02 (Mid)	West Haven	80.56	Middle
CT	35300	New Haven, CT MSA	170	South Central Connecticut PR	1542.00 (Mod)	West Haven	60.59	Moderate
CT	35300	New Haven, CT MSA	170	South Central Connecticut PR	1545.00 (Mod)	West Haven	53.74	Moderate
CT	35300	New Haven, CT MSA	170	South Central Connecticut PR	1546.00 (Mod)	West Haven	76.02	Moderate

State	MSA Code	MSA Name	County Code	County Name	Census Tract	City/Town	Income as % of MSA Median	Income Category
CT	35300	New Haven, CT MSA	170	South Central Connecticut PR	1547.00 (Upr)	West Haven	135.98	Upper
CT	35300	New Haven, CT MSA	170	South Central Connecticut PR	1548.00 (Mid)	West Haven	106.07	Middle
CT	35300	New Haven, CT MSA	170	South Central Connecticut PR	1549.00 (Mod)	West Haven	69.44	Moderate
CT	35300	New Haven, CT MSA	170	South Central Connecticut PR	1550.00 (Mod)	West Haven	77.5	Moderate
CT	35300	New Haven, CT MSA	170	South Central Connecticut PR	1551.00 (Mod)	West Haven	59.6	Moderate
CT	35300	New Haven, CT MSA	170	South Central Connecticut PR	1571.00 (Mid)	Orange	116.52	Middle
CT	35300	New Haven, CT MSA	170	South Central Connecticut PR	1572.00 (Upr)	Orange	163.86	Upper
CT	35300	New Haven, CT MSA	170	South Central Connecticut PR	1573.00 (Upr)	Orange	191.29	Upper
CT	35300	New Haven, CT MSA	170	South Central Connecticut PR	1574.00 (Upr)	Orange	144.64	Upper
CT	35300	New Haven, CT MSA	170	South Central Connecticut PR	1601.00 (Upr)	Woodbridge	182.31	Upper
CT	35300	New Haven, CT MSA	170	South Central Connecticut PR	1602.00 (Upr)	Woodbridge	187.25	Upper
CT	35300	New Haven, CT MSA	170	South Central Connecticut PR	1611.00 (Upr)	Bethany	165.81	Upper
CT	35300	New Haven, CT MSA	170	South Central Connecticut PR	1651.00 (Mid)	Hamden	87.26	Middle
CT	35300	New Haven, CT MSA	170	South Central Connecticut PR	1652.00 (Upr)	Hamden	192.27	Upper
CT	35300	New Haven, CT MSA	170	South Central Connecticut PR	1653.00 (Upr)	Hamden	173.16	Upper
CT	35300	New Haven, CT MSA	170	South Central Connecticut PR	1654.00 (Mid)	Hamden	108.31	Middle
CT	35300	New Haven, CT MSA	170	South Central Connecticut PR	1655.00 (Mod)	Hamden	65.94	Moderate
CT	35300	New Haven, CT MSA	170	South Central Connecticut PR	1656.00 (Mid)	Hamden	98.52	Middle
CT	35300	New Haven, CT MSA	170	South Central Connecticut PR	1657.00 (Mid)	Hamden	99.74	Middle
CT	35300	New Haven, CT MSA	170	South Central Connecticut PR	1658.01 (Mid)	Hamden	80.37	Middle
CT	35300	New Haven, CT MSA	170	South Central Connecticut PR	1658.02 (Upr)	Hamden	126.54	Upper
CT	35300	New Haven, CT MSA	170	South Central Connecticut PR	1659.00 (Upr)	Hamden	142.28	Upper
CT	35300	New Haven, CT MSA	170	South Central Connecticut PR	1660.02 (Upr)	Hamden	161.34	Upper
CT	35300	New Haven, CT MSA	170	South Central Connecticut PR	1660.03 (Mid)	Hamden	81.48	Middle
CT	35300	New Haven, CT MSA	170	South Central Connecticut PR	1660.04 (Mid)	Hamden	100.37	Middle
CT	35300	New Haven, CT MSA	170	South Central Connecticut PR	1671.01 (Upr)	North Haven	147.83	Upper
CT	35300	New Haven, CT MSA	170	South Central Connecticut PR	1671.02 (Upr)	North Haven	173.06	Upper
CT	35300	New Haven, CT MSA	170	South Central Connecticut PR	1672.01 (Mid)	North Haven	115.69	Middle
CT	35300	New Haven, CT MSA	170	South Central Connecticut PR	1672.02 (Upr)	North Haven	121.31	Upper
CT	35300	New Haven, CT MSA	170	South Central Connecticut PR	1673.01 (Mid)	North Haven	118.91	Middle
CT	35300	New Haven, CT MSA	170	South Central Connecticut PR	1701.00 (Low)	Meriden	32.87	Low

State	MSA Code	MSA Name	County Code	County Name	Census Tract	City/Town	Income as % of MSA Median	Income Category
CT	35300	New Haven, CT MSA	170	South Central Connecticut PR	1702.00 (Mod)	Meriden	57.25	Moderate
CT	35300	New Haven, CT MSA	170	South Central Connecticut PR	1703.00 (Low)	Meriden	45.4	Low
CT	35300	New Haven, CT MSA	170	South Central Connecticut PR	1704.00 (Mod)	Meriden	61.38	Moderate
CT	35300	New Haven, CT MSA	170	South Central Connecticut PR	1705.00 (Mid)	Meriden	112.18	Middle
CT	35300	New Haven, CT MSA	170	South Central Connecticut PR	1706.00 (Mod)	Meriden	69.95	Moderate
CT	35300	New Haven, CT MSA	170	South Central Connecticut PR	1707.00 (Mod)	Meriden	73.75	Moderate
CT	35300	New Haven, CT MSA	170	South Central Connecticut PR	1708.00 (Mod)	Meriden	69.3	Moderate
CT	35300	New Haven, CT MSA	170	South Central Connecticut PR	1709.00 (Low)	Meriden	49.91	Low
CT	35300	New Haven, CT MSA	170	South Central Connecticut PR	1710.00 (Low)	Meriden	49.48	Low
CT	35300	New Haven, CT MSA	170	South Central Connecticut PR	1711.00 (Mid)	Meriden	86.92	Middle
CT	35300	New Haven, CT MSA	170	South Central Connecticut PR	1712.01 (Upr)	Meriden	123.05	Upper
CT	35300	New Haven, CT MSA	170	South Central Connecticut PR	1712.02 (Mid)	Meriden	114.22	Middle
CT	35300	New Haven, CT MSA	170	South Central Connecticut PR	1713.00 (Mid)	Meriden	87.42	Middle
CT	35300	New Haven, CT MSA	170	South Central Connecticut PR	1714.00 (Mod)	Meriden	59.67	Moderate
CT	35300	New Haven, CT MSA	170	South Central Connecticut PR	1715.00 (Mod)	Meriden	55.09	Moderate
CT	35300	New Haven, CT MSA	170	South Central Connecticut PR	1716.00 (Mid)	Meriden	91.5	Middle
CT	35300	New Haven, CT MSA	170	South Central Connecticut PR	1717.00 (Mid)	Meriden	111.51	Middle
CT	35300	New Haven, CT MSA	170	South Central Connecticut PR	1751.00 (Mid)	Wallingford	93.12	Middle
CT	35300	New Haven, CT MSA	170	South Central Connecticut PR	1752.00 (Mid)	Wallingford	95.01	Middle
CT	35300	New Haven, CT MSA	170	South Central Connecticut PR	1753.00 (Mid)	Wallingford	119.34	Middle
CT	35300	New Haven, CT MSA	170	South Central Connecticut PR	1754.00 (Mid)	Wallingford	112.87	Middle
CT	35300	New Haven, CT MSA	170	South Central Connecticut PR	1755.01 (Upr)	Wallingford	159.69	Upper
CT	35300	New Haven, CT MSA	170	South Central Connecticut PR	1755.02 (Mid)	Wallingford	97.88	Middle
CT	35300	New Haven, CT MSA	170	South Central Connecticut PR	1756.00 (Mid)	Wallingford	111.8	Middle
CT	35300	New Haven, CT MSA	170	South Central Connecticut PR	1757.00 (Upr)	Wallingford	128.06	Upper
CT	35300	New Haven, CT MSA	170	South Central Connecticut PR	1758.00 (Upr)	Wallingford	144.61	Upper
CT	35300	New Haven, CT MSA	170	South Central Connecticut PR	1759.00 (Mid)	Wallingford	119.05	Middle
CT	35300	New Haven, CT MSA	170	South Central Connecticut PR	1760.00 (Mid)	Wallingford	117.78	Middle
CT	35300	New Haven, CT MSA	170	South Central Connecticut PR	1801.01 (Mid)	East Haven	89.47	Middle
CT	35300	New Haven, CT MSA	170	South Central Connecticut PR	1801.02 (Mid)	East Haven	80.9	Middle
CT	35300	New Haven, CT MSA	170	South Central Connecticut PR	1802.00 (Mod)	East Haven	78.08	Moderate

State	MSA Code	MSA Name	County Code	County Name	Census Tract	City/Town	Income as % of MSA Median	Income Category
CT	35300	New Haven, CT MSA	170	South Central Connecticut PR	1803.00 (Mod)	East Haven	73.9	Moderate
CT	35300	New Haven, CT MSA	170	South Central Connecticut PR	1804.00 (Mid)	East Haven	94.2	Middle
CT	35300	New Haven, CT MSA	170	South Central Connecticut PR	1805.00 (Mid)	East Haven	88.09	Middle
CT	35300	New Haven, CT MSA	170	South Central Connecticut PR	1806.01 (Mid)	East Haven	108.92	Middle
CT	35300	New Haven, CT MSA	170	South Central Connecticut PR	1806.02 (Mid)	East Haven	107.19	Middle
CT	35300	New Haven, CT MSA	170	South Central Connecticut PR	1841.01 (Mod)	Branford	73.8	Moderate
CT	35300	New Haven, CT MSA	170	South Central Connecticut PR	1842.00 (Mid)	Branford	85.67	Middle
CT	35300	New Haven, CT MSA	170	South Central Connecticut PR	1843.00 (Upr)	Branford	120.04	Upper
CT	35300	New Haven, CT MSA	170	South Central Connecticut PR	1844.00 (Mid)	Branford	118.45	Middle
CT	35300	New Haven, CT MSA	170	South Central Connecticut PR	1845.00 (Upr)	Branford	120.38	Upper
CT	35300	New Haven, CT MSA	170	South Central Connecticut PR	1846.00 (Upr)	Branford	176.03	Upper
CT	35300	New Haven, CT MSA	170	South Central Connecticut PR	1847.00 (Upr)	Branford	128.95	Upper
CT	35300	New Haven, CT MSA	170	South Central Connecticut PR	1861.00 (Upr)	North Branford	139.51	Upper
CT	35300	New Haven, CT MSA	170	South Central Connecticut PR	1862.00 (Upr)	North Branford	125.83	Upper
CT	35300	New Haven, CT MSA	170	South Central Connecticut PR	1901.00 (Mid)	Guilford	98.19	Middle
CT	35300	New Haven, CT MSA	170	South Central Connecticut PR	1902.00 (Upr)	Guilford	182.56	Upper
CT	35300	New Haven, CT MSA	170	South Central Connecticut PR	1903.01 (Upr)	Guilford	148.03	Upper
CT	35300	New Haven, CT MSA	170	South Central Connecticut PR	1903.02 (Upr)	Guilford	120.22	Upper
CT	35300	New Haven, CT MSA	170	South Central Connecticut PR	1903.03 (Upr)	Guilford	146.24	Upper
CT	35300	New Haven, CT MSA	170	South Central Connecticut PR	1941.01 (Upr)	Madison	131.86	Upper
CT	35300	New Haven, CT MSA	170	South Central Connecticut PR	1941.02 (Upr)	Madison	157.15	Upper
CT	35300	New Haven, CT MSA	170	South Central Connecticut PR	1942.01 (Upr)	Madison	177.43	Upper
CT	35300	New Haven, CT MSA	170	South Central Connecticut PR	1942.02 (Upr)	Madison	146.04	Upper
CT	35300	New Haven, CT MSA	170	South Central Connecticut PR	3614.01 (Mod)	New Haven	79.95	Moderate
CT	35300	New Haven, CT MSA	170	South Central Connecticut PR	3614.02 (Mod)	New Haven	70.84	Moderate
CT	35300	New Haven, CT MSA	170	South Central Connecticut PR	3615.00 (Mod)	West Haven	58.39	Moderate
CT	35300	New Haven, CT MSA	170	South Central Connecticut PR	9900.00 ()	NA	0	NA
CT	35980	Norwich-New London-Willimantic, CT MSA	180	Southeastern Connecticut PR	6903.00 (Mod)	New London	53.16	Moderate
CT	35980	Norwich-New London-Willimantic, CT MSA	180	Southeastern Connecticut PR	6904.00 (Low)	New London	39.56	Low
CT	35980	Norwich-New London-Willimantic, CT MSA	180	Southeastern Connecticut PR	6905.00 (Mod)	New London	53.05	Moderate
CT	35980	Norwich-New London-Willimantic, CT MSA	180	Southeastern Connecticut PR	6907.00 (Mod)	New London	57.03	Moderate

State	MSA Code	MSA Name	County Code	County Name	Census Tract	City/Town	Income as % of MSA Median	Income Category
CT	35980	Norwich-New London-Willimantic, CT MSA	180	Southeastern Connecticut PR	6908.00 (Mod)	New London	70.98	Moderate
CT	35980	Norwich-New London-Willimantic, CT MSA	180	Southeastern Connecticut PR	6909.00 (Upr)	New London	123.93	Upper
CT	35980	Norwich-New London-Willimantic, CT MSA	180	Southeastern Connecticut PR	6933.00 (Mid)	Waterford	110.51	Middle
CT	35980	Norwich-New London-Willimantic, CT MSA	180	Southeastern Connecticut PR	6934.00 (Mid)	Waterford	98.86	Middle
CT	35980	Norwich-New London-Willimantic, CT MSA	180	Southeastern Connecticut PR	6935.00 (Upr)	Waterford	140.2	Upper
CT	35980	Norwich-New London-Willimantic, CT MSA	180	Southeastern Connecticut PR	6936.00 (Mid)	Waterford	104.72	Middle
CT	35980	Norwich-New London-Willimantic, CT MSA	180	Southeastern Connecticut PR	6937.00 (Upr)	Waterford	161.06	Upper
CT	35980	Norwich-New London-Willimantic, CT MSA	180	Southeastern Connecticut PR	6952.01 (Upr)	Montville	130.88	Upper
CT	35980	Norwich-New London-Willimantic, CT MSA	180	Southeastern Connecticut PR	6952.02 (Mid)	Montville	113.94	Middle
CT	35980	Norwich-New London-Willimantic, CT MSA	180	Southeastern Connecticut PR	6961.00 (Mod)	Norwich	62.73	Moderate
CT	35980	Norwich-New London-Willimantic, CT MSA	180	Southeastern Connecticut PR	6962.00 (Upr)	Norwich	123.2	Upper
CT	35980	Norwich-New London-Willimantic, CT MSA	180	Southeastern Connecticut PR	6963.00 (Mid)	Norwich	118.85	Middle
CT	35980	Norwich-New London-Willimantic, CT MSA	180	Southeastern Connecticut PR	6964.01 (Mod)	Norwich	63.73	Moderate
CT	35980	Norwich-New London-Willimantic, CT MSA	180	Southeastern Connecticut PR	6965.00 (Mid)	Norwich	92.2	Middle
CT	35980	Norwich-New London-Willimantic, CT MSA	180	Southeastern Connecticut PR	6966.00 (Mid)	Norwich	117.47	Middle
CT	35980	Norwich-New London-Willimantic, CT MSA	180	Southeastern Connecticut PR	6967.01 (Mod)	Norwich	64.97	Moderate
CT	35980	Norwich-New London-Willimantic, CT MSA	180	Southeastern Connecticut PR	6968.00 (Mod)	Norwich	60.35	Moderate
CT	35980	Norwich-New London-Willimantic, CT MSA	180	Southeastern Connecticut PR	6970.00 (Mod)	Norwich	58.53	Moderate
CT	35980	Norwich-New London-Willimantic, CT MSA	180	Southeastern Connecticut PR	7001.00 (Mid)	Preston	110.77	Middle
CT	35980	Norwich-New London-Willimantic, CT MSA	180	Southeastern Connecticut PR	7011.00 (Mid)	Ledyard	119.29	Middle
CT	35980	Norwich-New London-Willimantic, CT MSA	180	Southeastern Connecticut PR	7012.00 (Upr)	Ledyard	132.36	Upper
CT	35980	Norwich-New London-Willimantic, CT MSA	180	Southeastern Connecticut PR	7021.00 (Upr)	Groton	121.75	Upper
CT	35980	Norwich-New London-Willimantic, CT MSA	180	Southeastern Connecticut PR	7023.00 (Mid)	Groton	92.59	Middle
CT	35980	Norwich-New London-Willimantic, CT MSA	180	Southeastern Connecticut PR	7024.00 (Mid)	Groton	107.84	Middle
CT	35980	Norwich-New London-Willimantic, CT MSA	180	Southeastern Connecticut PR	7025.00 (Low)	Groton	43.75	Low
CT	35980	Norwich-New London-Willimantic, CT MSA	180	Southeastern Connecticut PR	7026.00 (Upr)	Groton	140.56	Upper
CT	35980	Norwich-New London-Willimantic, CT MSA	180	Southeastern Connecticut PR	7027.00 (Mod)	Groton	77.2	Moderate
CT	35980	Norwich-New London-Willimantic, CT MSA	180	Southeastern Connecticut PR	7028.00 (Mod)	Groton	70.71	Moderate
CT	35980	Norwich-New London-Willimantic, CT MSA	180	Southeastern Connecticut PR	7029.00 (Upr)	Groton	200.3	Upper
CT	35980	Norwich-New London-Willimantic, CT MSA	180	Southeastern Connecticut PR	7030.00 (Upr)	Groton	174.1	Upper
CT	35980	Norwich-New London-Willimantic, CT MSA	180	Southeastern Connecticut PR	7051.01 (Upr)	Stonington	167.72	Upper

State	MSA Code	MSA Name	County Code	County Name	Census Tract	City/Town	Income as % of MSA Median	Income Category
CT	35980	Norwich-New London-Willimantic, CT MSA	180	Southeastern Connecticut PR	7051.02 (Mid)	Stonington	81.3	Middle
CT	35980	Norwich-New London-Willimantic, CT MSA	180	Southeastern Connecticut PR	7052.00 (Upr)	Stonington	123.48	Upper
CT	35980	Norwich-New London-Willimantic, CT MSA	180	Southeastern Connecticut PR	7053.00 (Upr)	Stonington	172.07	Upper
CT	35980	Norwich-New London-Willimantic, CT MSA	180	Southeastern Connecticut PR	7054.00 (Upr)	Stonington	130.87	Upper
CT	35980	Norwich-New London-Willimantic, CT MSA	180	Southeastern Connecticut PR	7071.00 (Mid)	North Stonington	97.17	Middle
CT	35980	Norwich-New London-Willimantic, CT MSA	180	Southeastern Connecticut PR	7091.00 (Mid)	Griswold	112.79	Middle
CT	35980	Norwich-New London-Willimantic, CT MSA	180	Southeastern Connecticut PR	7092.00 (Mod)	Griswold	67.52	Moderate
CT	35980	Norwich-New London-Willimantic, CT MSA	180	Southeastern Connecticut PR	7101.00 (Mid)	Lisbon	115.06	Middle
CT	35980	Norwich-New London-Willimantic, CT MSA	180	Southeastern Connecticut PR	7111.00 (Mid)	Sprague	95.17	Middle
CT	35980	Norwich-New London-Willimantic, CT MSA	180	Southeastern Connecticut PR	7121.00 (Upr)	Franklin	132.82	Upper
CT	35980	Norwich-New London-Willimantic, CT MSA	180	Southeastern Connecticut PR	7131.00 (Mid)	Bozrah	115.98	Middle
CT	35980	Norwich-New London-Willimantic, CT MSA	180	Southeastern Connecticut PR	7141.01 (Mid)	Colchester	87.28	Middle
CT	35980	Norwich-New London-Willimantic, CT MSA	180	Southeastern Connecticut PR	7141.03 (Upr)	Colchester	149.6	Upper
CT	35980	Norwich-New London-Willimantic, CT MSA	180	Southeastern Connecticut PR	7141.04 (Upr)	Colchester	154.31	Upper
CT	35980	Norwich-New London-Willimantic, CT MSA	180	Southeastern Connecticut PR	7151.00 (Upr)	Salem	130.16	Upper
CT	35980	Norwich-New London-Willimantic, CT MSA	180	Southeastern Connecticut PR	7161.01 (Upr)	East Lyme	129.88	Upper
CT	35980	Norwich-New London-Willimantic, CT MSA	180	Southeastern Connecticut PR	7161.02 (Upr)	East Lyme	164.62	Upper
CT	35980	Norwich-New London-Willimantic, CT MSA	180	Southeastern Connecticut PR	8003.00 (Low)	Windham	41.74	Low
CT	35980	Norwich-New London-Willimantic, CT MSA	180	Southeastern Connecticut PR	8004.00 (Mod)	Windham	76.42	Moderate
CT	35980	Norwich-New London-Willimantic, CT MSA	180	Southeastern Connecticut PR	8005.01 (Low)	Windham	44.86	Low
CT	35980	Norwich-New London-Willimantic, CT MSA	180	Southeastern Connecticut PR	8005.02 (Mid)	Windham	95.83	Middle
CT	35980	Norwich-New London-Willimantic, CT MSA	180	Southeastern Connecticut PR	8006.00 (Low)	Windham	35.59	Low
CT	35980	Norwich-New London-Willimantic, CT MSA	180	Southeastern Connecticut PR	8007.00 (Mod)	Windham	64.57	Moderate
CT	35980	Norwich-New London-Willimantic, CT MSA	180	Southeastern Connecticut PR	8701.00 (Upr)	Lebanon	123.54	Upper
CT	35980	Norwich-New London-Willimantic, CT MSA	180	Southeastern Connecticut PR	8702.00 (Mod)	Groton	66.55	Moderate
CT	35980	Norwich-New London-Willimantic, CT MSA	180	Southeastern Connecticut PR	8703.00 (Low)	New London	42.95	Low
CT	35980	Norwich-New London-Willimantic, CT MSA	180	Southeastern Connecticut PR	8705.01 (Mid)	Montville	100.23	Middle
CT	35980	Norwich-New London-Willimantic, CT MSA	180	Southeastern Connecticut PR	8705.02 (Mid)	Montville	97.02	Middle
CT	35980	Norwich-New London-Willimantic, CT MSA	180	Southeastern Connecticut PR	8707.01 (Upr)	East Lyme	127.85	Upper
CT	35980	Norwich-New London-Willimantic, CT MSA	180	Southeastern Connecticut PR	8707.03 (Upr)	East Lyme	120.29	Upper
CT	35980	Norwich-New London-Willimantic, CT MSA	180	Southeastern Connecticut PR	8707.04 (Upr)	East Lyme	134.67	Upper

State	MSA Code	MSA Name	County Code	County Name	Census Tract	City/Town	Income as % of MSA Median	Income Category
CT	35980	Norwich-New London-Willimantic, CT MSA	180	Southeastern Connecticut PR	9800.00 ()	Groton	0	NA
CT	35980	Norwich-New London-Willimantic, CT MSA	180	Southeastern Connecticut PR	9901.00 ()	NA	0	NA
CT	47930	Waterbury-Shelton, CT MSA	140	Naugatuck Valley PR	1101.00 (Mid)	Shelton	83.09	Middle
CT	47930	Waterbury-Shelton, CT MSA	140	Naugatuck Valley PR	1102.01 (Mid)	Shelton	115.06	Middle
CT	47930	Waterbury-Shelton, CT MSA	140	Naugatuck Valley PR	1102.02 (Upr)	Shelton	125.95	Upper
CT	47930	Waterbury-Shelton, CT MSA	140	Naugatuck Valley PR	1103.01 (Mid)	Shelton	119.73	Middle
CT	47930	Waterbury-Shelton, CT MSA	140	Naugatuck Valley PR	1103.02 (Upr)	Shelton	125.22	Upper
CT	47930	Waterbury-Shelton, CT MSA	140	Naugatuck Valley PR	1104.00 (Upr)	Shelton	153.47	Upper
CT	47930	Waterbury-Shelton, CT MSA	140	Naugatuck Valley PR	1105.00 (Upr)	Shelton	144.8	Upper
CT	47930	Waterbury-Shelton, CT MSA	140	Naugatuck Valley PR	1106.01 (Upr)	Shelton	136.64	Upper
CT	47930	Waterbury-Shelton, CT MSA	140	Naugatuck Valley PR	1106.02 (Upr)	Shelton	137.38	Upper
CT	47930	Waterbury-Shelton, CT MSA	140	Naugatuck Valley PR	1201.00 (Mid)	Derby	100.28	Middle
CT	47930	Waterbury-Shelton, CT MSA	140	Naugatuck Valley PR	1202.00 (Mid)	Derby	84.58	Middle
CT	47930	Waterbury-Shelton, CT MSA	140	Naugatuck Valley PR	1251.00 (Mid)	Ansonia	105.16	Middle
CT	47930	Waterbury-Shelton, CT MSA	140	Naugatuck Valley PR	1252.00 (Mod)	Ansonia	64.12	Moderate
CT	47930	Waterbury-Shelton, CT MSA	140	Naugatuck Valley PR	1253.00 (Mod)	Ansonia	70.43	Moderate
CT	47930	Waterbury-Shelton, CT MSA	140	Naugatuck Valley PR	1254.00 (Mod)	Ansonia	60.69	Moderate
CT	47930	Waterbury-Shelton, CT MSA	140	Naugatuck Valley PR	1301.01 (Mid)	Seymour	83.64	Middle
CT	47930	Waterbury-Shelton, CT MSA	140	Naugatuck Valley PR	1301.02 (Mid)	Seymour	108.5	Middle
CT	47930	Waterbury-Shelton, CT MSA	140	Naugatuck Valley PR	1302.01 (Upr)	Seymour	175.31	Upper
CT	47930	Waterbury-Shelton, CT MSA	140	Naugatuck Valley PR	1302.02 (Mid)	Seymour	109.98	Middle
CT	47930	Waterbury-Shelton, CT MSA	140	Naugatuck Valley PR	3411.00 (Upr)	Beacon Falls	121.09	Upper
CT	47930	Waterbury-Shelton, CT MSA	140	Naugatuck Valley PR	3421.00 (Upr)	Bethlehem	134.55	Upper
CT	47930	Waterbury-Shelton, CT MSA	140	Naugatuck Valley PR	3431.01 (Upr)	Cheshire	165.07	Upper
CT	47930	Waterbury-Shelton, CT MSA	140	Naugatuck Valley PR	3431.02 (Upr)	Cheshire	190.64	Upper
CT	47930	Waterbury-Shelton, CT MSA	140	Naugatuck Valley PR	3432.00 (Upr)	Cheshire	158.05	Upper
CT	47930	Waterbury-Shelton, CT MSA	140	Naugatuck Valley PR	3433.00 (Upr)	Cheshire	166.14	Upper
CT	47930	Waterbury-Shelton, CT MSA	140	Naugatuck Valley PR	3434.00 (Upr)	Cheshire	143.82	Upper
CT	47930	Waterbury-Shelton, CT MSA	140	Naugatuck Valley PR	3441.00 (Upr)	Middlebury	142.64	Upper
CT	47930	Waterbury-Shelton, CT MSA	140	Naugatuck Valley PR	3442.00 (Upr)	Middlebury	172.21	Upper
CT	47930	Waterbury-Shelton, CT MSA	140	Naugatuck Valley PR	3451.00 (Mod)	Naugatuck	73.14	Moderate

State	MSA Code	MSA Name	County Code	County Name	Census Tract	City/Town	Income as % of MSA Median	Income Category
CT	47930	Waterbury-Shelton, CT MSA	140	Naugatuck Valley PR	3452.01 (Mid)	Naugatuck	104.4	Middle
CT	47930	Waterbury-Shelton, CT MSA	140	Naugatuck Valley PR	3452.02 (Mid)	Naugatuck	116.1	Middle
CT	47930	Waterbury-Shelton, CT MSA	140	Naugatuck Valley PR	3453.00 (Mid)	Naugatuck	95.85	Middle
CT	47930	Waterbury-Shelton, CT MSA	140	Naugatuck Valley PR	3454.00 (Mid)	Naugatuck	93.41	Middle
CT	47930	Waterbury-Shelton, CT MSA	140	Naugatuck Valley PR	3461.01 (Mid)	Oxford	119.99	Middle
CT	47930	Waterbury-Shelton, CT MSA	140	Naugatuck Valley PR	3461.02 (Upr)	Oxford	132.91	Upper
CT	47930	Waterbury-Shelton, CT MSA	140	Naugatuck Valley PR	3471.00 (Upr)	Prospect	133.87	Upper
CT	47930	Waterbury-Shelton, CT MSA	140	Naugatuck Valley PR	3472.00 (Upr)	Prospect	134.49	Upper
CT	47930	Waterbury-Shelton, CT MSA	140	Naugatuck Valley PR	3481.11 (Upr)	Southbury	143.52	Upper
CT	47930	Waterbury-Shelton, CT MSA	140	Naugatuck Valley PR	3481.22 (Upr)	Southbury	159.29	Upper
CT	47930	Waterbury-Shelton, CT MSA	140	Naugatuck Valley PR	3481.23 (Upr)	Southbury	151.7	Upper
CT	47930	Waterbury-Shelton, CT MSA	140	Naugatuck Valley PR	3481.24 (Mid)	Southbury	90.3	Middle
CT	47930	Waterbury-Shelton, CT MSA	140	Naugatuck Valley PR	3481.25 (Upr)	Southbury	137.15	Upper
CT	47930	Waterbury-Shelton, CT MSA	140	Naugatuck Valley PR	3491.00 (Mid)	Thomaston	102.42	Middle
CT	47930	Waterbury-Shelton, CT MSA	140	Naugatuck Valley PR	3492.00 (Mid)	Thomaston	88.18	Middle
CT	47930	Waterbury-Shelton, CT MSA	140	Naugatuck Valley PR	3501.01 (Low)	Waterbury	21.68	Low
CT	47930	Waterbury-Shelton, CT MSA	140	Naugatuck Valley PR	3502.00 (Low)	Waterbury	33.42	Low
CT	47930	Waterbury-Shelton, CT MSA	140	Naugatuck Valley PR	3503.00 (Low)	Waterbury	41.79	Low
CT	47930	Waterbury-Shelton, CT MSA	140	Naugatuck Valley PR	3504.00 (Low)	Waterbury	28.19	Low
CT	47930	Waterbury-Shelton, CT MSA	140	Naugatuck Valley PR	3505.00 (Low)	Waterbury	32.7	Low
CT	47930	Waterbury-Shelton, CT MSA	140	Naugatuck Valley PR	3508.00 (Mod)	Waterbury	52.91	Moderate
CT	47930	Waterbury-Shelton, CT MSA	140	Naugatuck Valley PR	3509.00 (Mod)	Waterbury	64.17	Moderate
CT	47930	Waterbury-Shelton, CT MSA	140	Naugatuck Valley PR	3510.00 (Mod)	Waterbury	64.88	Moderate
CT	47930	Waterbury-Shelton, CT MSA	140	Naugatuck Valley PR	3511.00 (Low)	Waterbury	49.52	Low
CT	47930	Waterbury-Shelton, CT MSA	140	Naugatuck Valley PR	3512.00 (Low)	Waterbury	47.14	Low
CT	47930	Waterbury-Shelton, CT MSA	140	Naugatuck Valley PR	3513.00 (Mod)	Waterbury	59.36	Moderate
CT	47930	Waterbury-Shelton, CT MSA	140	Naugatuck Valley PR	3514.00 (Low)	Waterbury	48.57	Low
CT	47930	Waterbury-Shelton, CT MSA	140	Naugatuck Valley PR	3515.00 (Mod)	Waterbury	71.5	Moderate
CT	47930	Waterbury-Shelton, CT MSA	140	Naugatuck Valley PR	3516.01 (Mod)	Waterbury	75.12	Moderate
CT	47930	Waterbury-Shelton, CT MSA	140	Naugatuck Valley PR	3516.02 (Mod)	Waterbury	77.54	Moderate
CT	47930	Waterbury-Shelton, CT MSA	140	Naugatuck Valley PR	3517.00 (Low)	Waterbury	36.8	Low

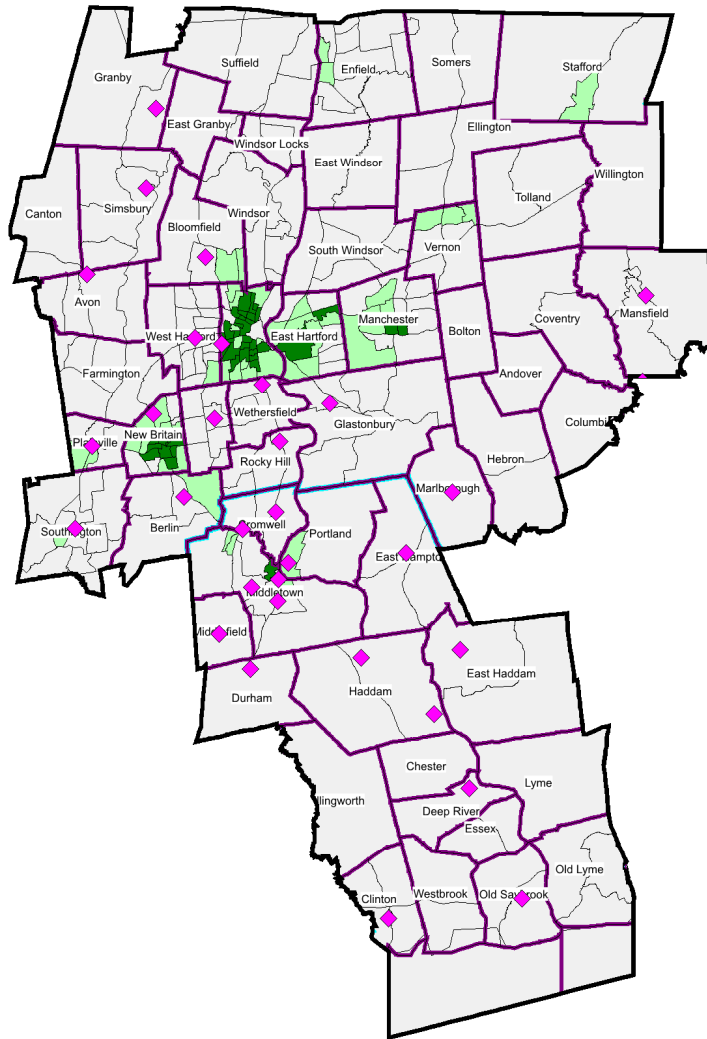
State	MSA Code	MSA Name	County Code	County Name	Census Tract	City/Town	Income as % of MSA Median	Income Category
CT	47930	Waterbury-Shelton, CT MSA	140	Naugatuck Valley PR	3518.00 (Mid)	Waterbury	86.46	Middle
CT	47930	Waterbury-Shelton, CT MSA	140	Naugatuck Valley PR	3519.00 (Upr)	Waterbury	127.54	Upper
CT	47930	Waterbury-Shelton, CT MSA	140	Naugatuck Valley PR	3520.00 (Mid)	Waterbury	106.91	Middle
CT	47930	Waterbury-Shelton, CT MSA	140	Naugatuck Valley PR	3521.00 (Mod)	Waterbury	67.17	Moderate
CT	47930	Waterbury-Shelton, CT MSA	140	Naugatuck Valley PR	3522.00 (Low)	Waterbury	43.54	Low
CT	47930	Waterbury-Shelton, CT MSA	140	Naugatuck Valley PR	3523.00 (Low)	Waterbury	45.25	Low
CT	47930	Waterbury-Shelton, CT MSA	140	Naugatuck Valley PR	3524.00 (Mod)	Waterbury	50.42	Moderate
CT	47930	Waterbury-Shelton, CT MSA	140	Naugatuck Valley PR	3525.00 (Mod)	Waterbury	72.81	Moderate
CT	47930	Waterbury-Shelton, CT MSA	140	Naugatuck Valley PR	3526.00 (Mod)	Waterbury	73.93	Moderate
CT	47930	Waterbury-Shelton, CT MSA	140	Naugatuck Valley PR	3527.01 (Mod)	Waterbury	69.01	Moderate
CT	47930	Waterbury-Shelton, CT MSA	140	Naugatuck Valley PR	3527.02 (Mod)	Waterbury	79.35	Moderate
CT	47930	Waterbury-Shelton, CT MSA	140	Naugatuck Valley PR	3528.00 (Mod)	Waterbury	55.82	Moderate
CT	47930	Waterbury-Shelton, CT MSA	140	Naugatuck Valley PR	3601.00 (Mid)	Watertown	102.7	Middle
CT	47930	Waterbury-Shelton, CT MSA	140	Naugatuck Valley PR	3602.00 (Mid)	Watertown	117.23	Middle
CT	47930	Waterbury-Shelton, CT MSA	140	Naugatuck Valley PR	3603.00 (Mid)	Watertown	93.97	Middle
CT	47930	Waterbury-Shelton, CT MSA	140	Naugatuck Valley PR	3604.00 (Mid)	Watertown	85.92	Middle
CT	47930	Waterbury-Shelton, CT MSA	140	Naugatuck Valley PR	3611.00 (Upr)	Wolcott	129.19	Upper
CT	47930	Waterbury-Shelton, CT MSA	140	Naugatuck Valley PR	3612.00 (Mid)	Wolcott	114.25	Middle
CT	47930	Waterbury-Shelton, CT MSA	140	Naugatuck Valley PR	3613.00 (Upr)	Wolcott	134.25	Upper
CT	47930	Waterbury-Shelton, CT MSA	140	Naugatuck Valley PR	3621.01 (Mid)	Woodbury	108.43	Middle
CT	47930	Waterbury-Shelton, CT MSA	140	Naugatuck Valley PR	3621.02 (Upr)	Woodbury	122.26	Upper
CT	47930	Waterbury-Shelton, CT MSA	140	Naugatuck Valley PR	4051.00 (Mid)	Bristol	85.71	Middle
CT	47930	Waterbury-Shelton, CT MSA	140	Naugatuck Valley PR	4052.00 (Mid)	Bristol	92.44	Middle
CT	47930	Waterbury-Shelton, CT MSA	140	Naugatuck Valley PR	4053.00 (Mid)	Bristol	111.45	Middle
CT	47930	Waterbury-Shelton, CT MSA	140	Naugatuck Valley PR	4054.01 (Mid)	Bristol	118.53	Middle
CT	47930	Waterbury-Shelton, CT MSA	140	Naugatuck Valley PR	4054.02 (Mod)	Bristol	60.86	Moderate
CT	47930	Waterbury-Shelton, CT MSA	140	Naugatuck Valley PR	4055.00 (Mid)	Bristol	84.98	Middle
CT	47930	Waterbury-Shelton, CT MSA	140	Naugatuck Valley PR	4056.00 (Mid)	Bristol	83.56	Middle
CT	47930	Waterbury-Shelton, CT MSA	140	Naugatuck Valley PR	4057.00 (Mid)	Bristol	81.86	Middle
CT	47930	Waterbury-Shelton, CT MSA	140	Naugatuck Valley PR	4058.01 (Mid)	Bristol	116.64	Middle
CT	47930	Waterbury-Shelton, CT MSA	140	Naugatuck Valley PR	4058.02 (Upr)	Bristol	120.68	Upper

State	MSA Code	MSA Name	County Code	County Name	Census Tract	City/Town	Income as % of MSA Median	Income Category
CT	47930	Waterbury-Shelton, CT MSA	140	Naugatuck Valley PR	4059.00 (Upr)	Bristol	131.96	Upper
CT	47930	Waterbury-Shelton, CT MSA	140	Naugatuck Valley PR	4060.01 (Mid)	Bristol	88.41	Middle
CT	47930	Waterbury-Shelton, CT MSA	140	Naugatuck Valley PR	4060.02 (Mid)	Bristol	117.36	Middle
CT	47930	Waterbury-Shelton, CT MSA	140	Naugatuck Valley PR	4061.00 (Mod)	Bristol	60.23	Moderate
CT	47930	Waterbury-Shelton, CT MSA	140	Naugatuck Valley PR	4253.00 (Upr)	Plymouth	130.99	Upper
CT	47930	Waterbury-Shelton, CT MSA	140	Naugatuck Valley PR	4254.00 (Mid)	Plymouth	112.97	Middle
CT	47930	Waterbury-Shelton, CT MSA	140	Naugatuck Valley PR	4255.00 (Mid)	Plymouth	97.05	Middle
MA	44140	Springfield, MA MSA	13	Hampden	8001.01 (Mod)	Springfield	59.88	Moderate
MA	44140	Springfield, MA MSA	13	Hampden	8001.02 (Mod)	Springfield	58.05	Moderate
MA	44140	Springfield, MA MSA	13	Hampden	8002.01 (Mid)	Springfield	87.54	Middle
MA	44140	Springfield, MA MSA	13	Hampden	8002.02 (Mid)	Springfield	80.8	Middle
MA	44140	Springfield, MA MSA	13	Hampden	8003.00 (Mid)	Springfield	93.69	Middle
MA	44140	Springfield, MA MSA	13	Hampden	8004.00 (Mod)	Springfield	67.25	Moderate
MA	44140	Springfield, MA MSA	13	Hampden	8005.00 (Mid)	Springfield	89.64	Middle
MA	44140	Springfield, MA MSA	13	Hampden	8006.00 (Low)	Springfield	24.94	Low
MA	44140	Springfield, MA MSA	13	Hampden	8007.00 (Low)	Springfield	46.35	Low
MA	44140	Springfield, MA MSA	13	Hampden	8008.00 (Low)	Springfield	30.48	Low
MA	44140	Springfield, MA MSA	13	Hampden	8009.00 (Low)	Springfield	36.09	Low
MA	44140	Springfield, MA MSA	13	Hampden	8011.01 (Low)	Springfield	25.65	Low
MA	44140	Springfield, MA MSA	13	Hampden	8011.02 ()	Springfield	0	NA
MA	44140	Springfield, MA MSA	13	Hampden	8012.00 (Low)	Springfield	37.83	Low
MA	44140	Springfield, MA MSA	13	Hampden	8013.00 (Mod)	Springfield	57.35	Moderate
MA	44140	Springfield, MA MSA	13	Hampden	8014.01 (Mod)	Springfield	51.8	Moderate
MA	44140	Springfield, MA MSA	13	Hampden	8014.02 (Mod)	Springfield	78.49	Moderate
MA	44140	Springfield, MA MSA	13	Hampden	8015.01 (Mid)	Springfield	80.81	Middle
MA	44140	Springfield, MA MSA	13	Hampden	8015.02 (Mod)	Springfield	58.45	Moderate
MA	44140	Springfield, MA MSA	13	Hampden	8015.03 (Mod)	Springfield	66.71	Moderate
MA	44140	Springfield, MA MSA	13	Hampden	8016.01 (Mid)	Springfield	98.3	Middle
MA	44140	Springfield, MA MSA	13	Hampden	8016.02 (Mid)	Springfield	88.82	Middle
MA	44140	Springfield, MA MSA	13	Hampden	8016.03 (Mid)	Springfield	112.5	Middle
MA	44140	Springfield, MA MSA	13	Hampden	8016.04 (Mid)	Springfield	119.94	Middle

State	MSA Code	MSA Name	County Code	County Name	Census Tract	City/Town	Income as % of MSA Median	Income Category
MA	44140	Springfield, MA MSA	13	Hampden	8016.05 (Mod)	Springfield	76.88	Moderate
MA	44140	Springfield, MA MSA	13	Hampden	8017.00 (Low)	Springfield	43.43	Low
MA	44140	Springfield, MA MSA	13	Hampden	8018.00 (Low)	Springfield	44.49	Low
MA	44140	Springfield, MA MSA	13	Hampden	8019.01 (Low)	Springfield	33.63	Low
MA	44140	Springfield, MA MSA	13	Hampden	8019.02 (Mod)	Springfield	63.5	Moderate
MA	44140	Springfield, MA MSA	13	Hampden	8020.00 (Low)	Springfield	28.17	Low
MA	44140	Springfield, MA MSA	13	Hampden	8021.01 (Mid)	Springfield	81.37	Middle
MA	44140	Springfield, MA MSA	13	Hampden	8022.00 (Mod)	Springfield	53.45	Moderate
MA	44140	Springfield, MA MSA	13	Hampden	8023.00 (Mod)	Springfield	63.23	Moderate
MA	44140	Springfield, MA MSA	13	Hampden	8024.00 (Upr)	Springfield	137.78	Upper
MA	44140	Springfield, MA MSA	13	Hampden	8025.00 (Mid)	Springfield	102.71	Middle
MA	44140	Springfield, MA MSA	13	Hampden	8026.01 (Mod)	Springfield	75.45	Moderate
MA	44140	Springfield, MA MSA	13	Hampden	8026.02 (Mid)	Springfield	116.71	Middle
MA	44140	Springfield, MA MSA	13	Hampden	8104.03 (Mid)	Ludlow	80.42	Middle
MA	44140	Springfield, MA MSA	13	Hampden	8104.04 (Mid)	Ludlow	108.17	Middle
MA	44140	Springfield, MA MSA	13	Hampden	8104.12 (Mid)	Ludlow	114.12	Middle
MA	44140	Springfield, MA MSA	13	Hampden	8104.14 (Upr)	Ludlow	164.26	Upper
MA	44140	Springfield, MA MSA	13	Hampden	8106.01 (Mod)	Chicopee	64.4	Moderate
MA	44140	Springfield, MA MSA	13	Hampden	8106.02 (Upr)	Chicopee	145.61	Upper
MA	44140	Springfield, MA MSA	13	Hampden	8107.00 (Mod)	Chicopee	72.71	Moderate
MA	44140	Springfield, MA MSA	13	Hampden	8108.00 (Mod)	Chicopee	67.59	Moderate
MA	44140	Springfield, MA MSA	13	Hampden	8109.01 (Mod)	Chicopee	55.66	Moderate
MA	44140	Springfield, MA MSA	13	Hampden	8109.02 (Mid)	Chicopee	90.93	Middle
MA	44140	Springfield, MA MSA	13	Hampden	8110.00 (Mid)	Chicopee	106.59	Middle
MA	44140	Springfield, MA MSA	13	Hampden	8111.01 (Mod)	Chicopee	67.23	Moderate
MA	44140	Springfield, MA MSA	13	Hampden	8111.02 (Mod)	Chicopee	77.8	Moderate
MA	44140	Springfield, MA MSA	13	Hampden	8112.00 (Mid)	Chicopee	95.2	Middle
MA	44140	Springfield, MA MSA	13	Hampden	8113.01 (Mid)	Chicopee	90.75	Middle
MA	44140	Springfield, MA MSA	13	Hampden	8113.02 (Mid)	Chicopee	102.61	Middle
MA	44140	Springfield, MA MSA	13	Hampden	8133.01 (Upr)	Longmeadow	193.25	Upper
MA	44140	Springfield, MA MSA	13	Hampden	8133.03 (Upr)	Longmeadow	241.54	Upper

State	MSA Code	MSA Name	County Code	County Name	Census Tract	City/Town	Income as % of MSA Median	Income Category
MA	44140	Springfield, MA MSA	13	Hampden	8133.04 (Upr)	Longmeadow	202.47	Upper
MA	44140	Springfield, MA MSA	13	Hampden	8134.01 (Mid)	East Longmeadow	118.61	Middle
MA	44140	Springfield, MA MSA	13	Hampden	8134.03 (Upr)	East Longmeadow	163.41	Upper
MA	44140	Springfield, MA MSA	13	Hampden	8134.04 (Upr)	East Longmeadow	171.16	Upper
MA	44140	Springfield, MA MSA	13	Hampden	8135.00 (Upr)	Hampden	140.71	Upper
MA	44140	Springfield, MA MSA	13	Hampden	8136.01 (Upr)	Wilbraham	153.39	Upper
MA	44140	Springfield, MA MSA	13	Hampden	8136.02 (Upr)	Wilbraham	203.11	Upper

Liberty Bank "Hartford" Assessment Area

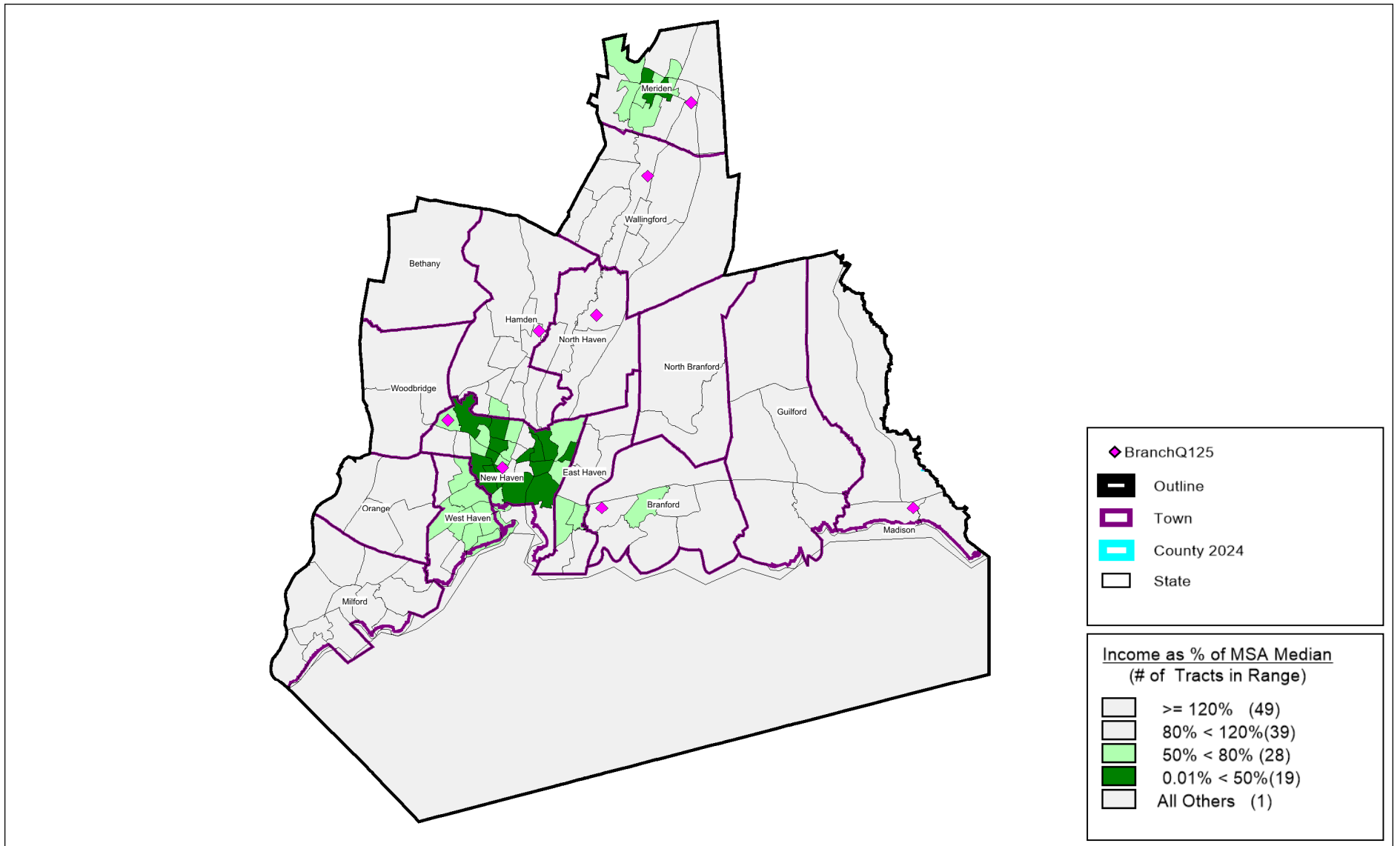


- ◆ BranchQ125
- Outline
- Town
- County 2024
- State

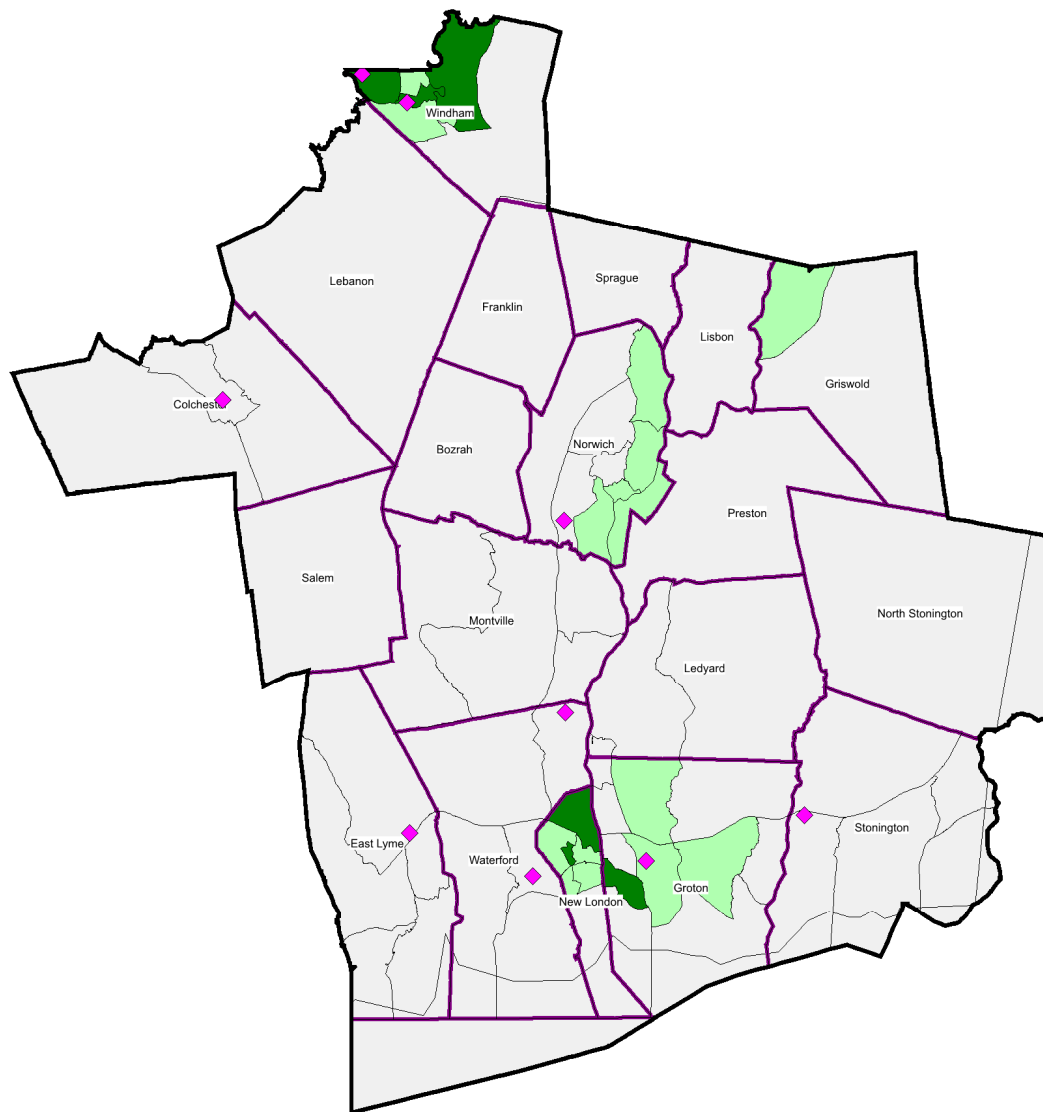
Income as % of MSA Median
(# of Tracts in Range)

- >= 120% (79)
- 80% < 120% (118)
- 50% < 80% (48)
- 0.01% < 50% (40)
- All Others (9)

Liberty Bank "New Haven" Assessment Area



Liberty Bank "New London-Willimantic" Assessment Area

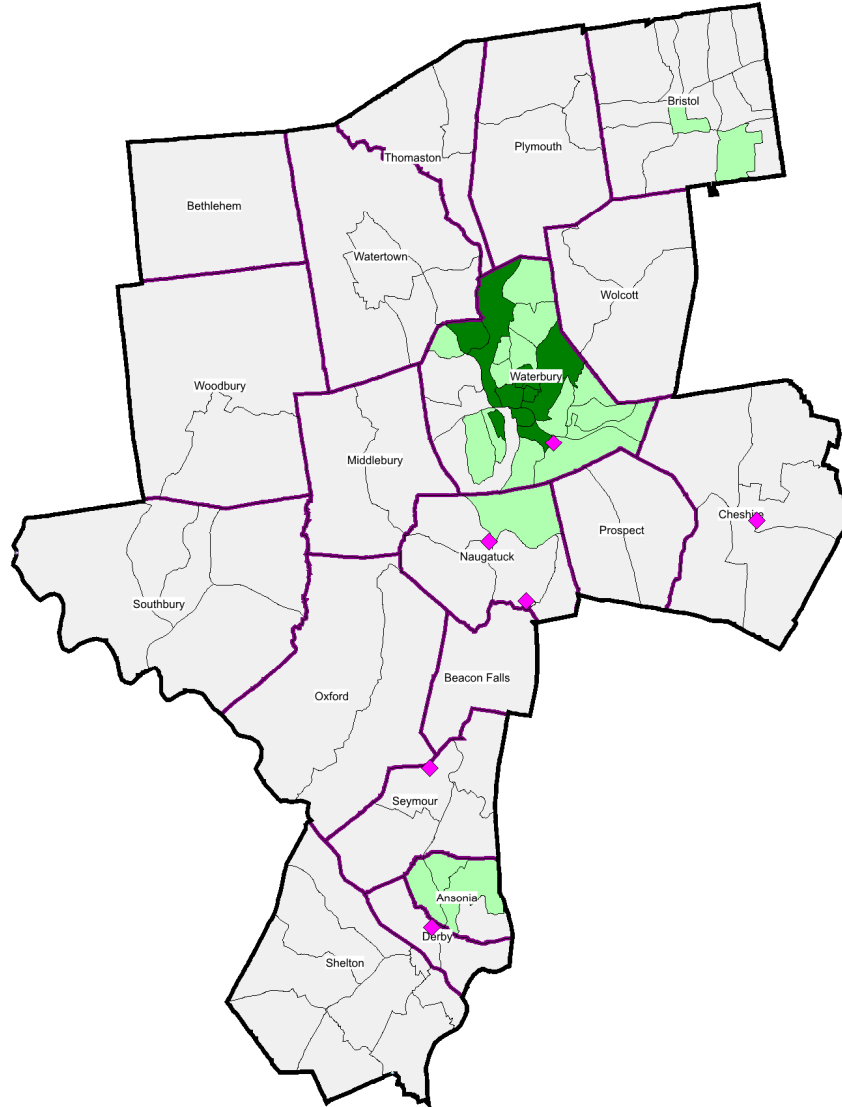


- ◆ BranchQ125
- Outline
- Town
- County 2024
- State

Income as % of MSA Median
(# of Tracts in Range)

- >= 120% (24)
- 80% < 120%(21)
- 50% < 80% (15)
- 0.01% < 50%(6)
- All Others (2)

Liberty Bank "Waterbury" Assessment Area



- ◆ BranchQ125
- Outline
- Town
- County 2024
- State

Income as % of MSA Median
(# of Tracts in Range)

- >= 120% (30)
- 80% < 120%(37)
- 50% < 80% (20)
- 0.01% < 50%(11)

Liberty Bank "Springfield" Assessment Area

